
AIR & WATER

SOLUTIONS

WATER HEATING & TREATMENT | COMMERCIAL AC | DUCTLESS & VRF



GE APPLIANCES
a Haier company



Jim Skaggs
 Vice President of Sales
 Air & Water Solutions

We brought two powerhouses together, GE Appliances and Haier, to redefine the industry and to make sure you get the support you need. We're listening and ready to help at air.water@geappliances.com



TABLE OF CONTENTS

WATER HEATERS

WiFi Connected Electric Water Heaters	56 - 59	127
RealMax™ Series Water Heaters	60 - 63	127
Flexible-Capacity Electronic Water Heaters	64 - 65	128
Tankless Electric Water Heaters	66 - 67	128
GeoSpring™ Solar Water Heaters	68 - 71	129
Electric Point of Use Tank-Style	68 - 69	

WATER TREATMENT

Water Softeners	76 - 79	123
Under Sink Water Filtration	80 - 81	124
Whole House Water Filtration	82 - 83	125
Disposers & Compactors	84 - 87	125 - 126

PRODUCT SPECIFICATIONS

Warranty	104 - 106
Nomenclature	107 - 108



GE Appliances helps you conserve energy and save money. We have been an ENERGY STAR® Partner since 2001. We are committed to creating energy-efficient, high-performance household appliances.

As an ENERGY STAR partner, GE Appliances has determined that the appliances marked with the ENERGY STAR logo meet the ENERGY STAR guidelines for energy efficiency.

Before purchasing an ENERGY STAR certified appliance, read important information about its estimated annual energy consumption or energy-efficiency rating available from your retailer, geappliances.com or energystar.gov.



Compliant with the Americans with Disabilities Act



Appliances with built-in WiFi powered by SmartHQ™ offer remote monitoring and enhanced features are indicated by this icon.



This mark indicates that a product has voice assistance capabilities..



GE Appliances and the SmartHQ app use industry-best practices for IoT cybersecurity and consumer data protection.



WATER HEATERS

We are committed to win in the water heater category, investing more than \$60 million in our Camden, SC, manufacturing facility to support our industry-leading gas water heater product. We offer a full line of water heaters including Flexible Capacity Technology—winner of the AHR Innovation Finalist award—which provides up to 60% more hot water at precise temperatures. And our best-in-class standard electric water heaters are designed to lead the way in performance and durability.



AIR&WATER
SOLUTIONS

KEY TAKEAWAYS

Complete line of electric and gas water heaters

Best-in-class capacity for 50-, 40- and 30-gallon tall and short water heaters*

Up to 8-/10-/12-year built-to-last warranties

*Compared to other electric steel tank water heaters per DOE rated gallon capacity.



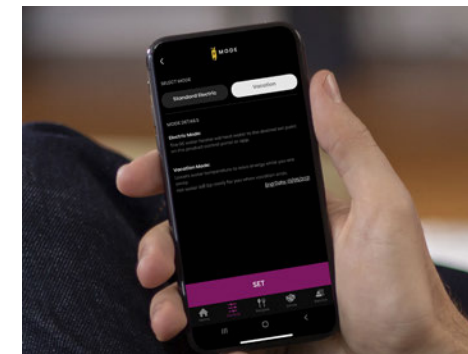
WIFI CONNECTED ELECTRIC WATER HEATERS

FEATURE HIGHLIGHTS



REAL CAPACITY

The only water heaters that hold a real 50, 40 or 30 gallons of water.*



BUILT-IN WIFI

Easily adjust temperatures, set vacation mode schedules and receive notifications with Built-in WiFi powered by SmartHQ™.



HIGH FIRST HOUR RATING (FHR)**

These best-in-class units deliver a high volume of hot water in the first hour.

* Compared to 50, 40 and 30 gallon electric steel tank water heaters per DOE rated gallon capacity.
** First Hour Rating (FHR) test simulates hot water usage and indicates how many gallons of water are delivered in one hour before water temperature drops from 125°F to 110°F.

WIFI CONNECTED ELECTRIC WATER HEATERS



GE50T12BLM

GE 50-GALLON RATED CAPACITY TALL

- Family size 3 to 5*
- Electronic controls
- Built-in WiFi powered by SmartHQ™
- Normal/Vacation modes
- Two 5,500-watt stainless steel heating elements
- 78-gallon First Hour Rating
- Sensing anode rod
- Brass drain valve

GE50T10BLM (not shown)

- Two 5,500-watt copper heating elements
- Standard anode rod



GE50S12BLM

GE 50-GALLON RATED CAPACITY SHORT

- Family size 3 to 5*
- Electronic controls
- Built-in WiFi powered by SmartHQ
- Normal/Vacation modes
- Two 5,500-watt stainless steel heating elements
- 75-gallon First Hour Rating
- Sensing anode rod
- Brass drain valve

GE50S10BLM (not shown)

- Two 5,500-watt copper heating elements
- Standard anode rod



GE40T12BLM

GE 40-GALLON RATED CAPACITY TALL

- Family size 2 to 4*
- Electronic controls
- Built-in WiFi powered by SmartHQ
- Normal/Vacation modes
- Two 5,500-watt stainless steel heating elements
- 66-gallon First Hour Rating
- Sensing anode rod
- Brass drain valve

GE40T10BLM (not shown)

- Two 5,500-watt copper heating elements
- Standard anode rod



GE40S12BLM

GE 40-GALLON RATED CAPACITY SHORT

- Family size 2 to 4*
- Electronic controls
- Built-in WiFi powered by SmartHQ
- Normal/Vacation modes
- Two 5,500-watt stainless steel heating elements
- 65-gallon First Hour Rating
- Sensing anode rod
- Brass drain valve

GE40S10BLM (not shown)

- Two 5,500-watt copper heating elements
- Standard anode rod



GE30T12BLM

GE 30-GALLON RATED CAPACITY TALL

- Family size 1 to 3*
- Electronic controls
- Built-in WiFi powered by SmartHQ
- Normal/Vacation modes
- Two 5,500-watt stainless steel heating elements
- 59-gallon First Hour Rating
- Sensing anode rod
- Brass drain valve

GE30T10BLM (not shown)

- Two 5,500-watt copper heating elements
- Standard anode rod



GE30S12BLM

GE 30-GALLON RATED CAPACITY SHORT

- Family size 1 to 3*
- Electronic controls
- Built-in WiFi powered by SmartHQ
- Normal/Vacation modes
- Two 5,500-watt stainless steel heating elements
- 60-gallon First Hour Rating
- Sensing anode rod
- Brass drain valve

GE30S10BLM (not shown)

- Two 5,500-watt copper heating elements
- Standard anode rod

*Household sizing based on back-to-back showers, 8 minutes long. Complete features and specifications on page 127.

FEATURE HIGHLIGHTS



REAL CAPACITY

Get the most hot showers from our RealMax series of water heaters that hold a true 30, 40 and 50 gallons of hot water.



LEADING WARRANTY

GE Appliances offers an industry-leading warranty on all our water heaters.



LEADING PERFORMANCE

Live comfortably with best in class performance that delivers high first hour ratings. (Measured through DOE First Hour Rating)

REALMAX™ SERIES WATER HEATERS

REALMAX SERIES WATER HEATERS



GE50T10BAM (PREMIUM)
GE 50-GALLON RATED CAPACITY TALL

- 10-Year Warranty
- Thermostat
- Two 5,500-watt stainless steel heating elements
- Brass drain valves

- GE50T08BAM** (CHOICE)
- 8-Year Warranty
 - Thermostat
 - Two 5,500-watt copper heating elements



GE50S10BAM (PREMIUM)
GE 50-GALLON RATED CAPACITY SHORT

- 10-Year Warranty
- Thermostat
- Two 5,500-watt stainless steel heating elements
- Brass drain valves

- GE50S08BAM** (CHOICE)
- 8-Year Warranty
 - Thermostat
 - Two 5,500-watt copper heating elements



GE40T10BAM (PREMIUM)
GE 40-GALLON RATED CAPACITY TALL

- 10-Year Warranty
- Thermostat
- Two 5,500-watt stainless steel heating elements
- Brass drain valves

- GE40T08BAM** (CHOICE)
- 8-Year Warranty
 - Thermostat
 - Two 5,500-watt copper heating elements



GE40S10BAM (PREMIUM)
GE 50-GALLON RATED CAPACITY SHORT

- 10-Year Warranty
- Thermostat
- Two 5,500-watt stainless steel heating elements
- Brass drain valves

- GE40S08BAM** (CHOICE)
- 8-Year Warranty
 - Thermostat
 - Two 5,500-watt copper heating elements



GE30T10BAM (PREMIUM)
GE 30-GALLON RATED CAPACITY TALL

- 10-Year Warranty
- Thermostat
- Brass drain valves
- Two 5,500-watt stainless steel heating elements

- GE30T08BAM** (CHOICE)
- 8-Year Warranty
 - Thermostat
 - Two 5,500-watt copper heating elements



GE30S10BAM (PREMIUM)
GE 30-GALLON RATED CAPACITY SHORT

- 10-Year Warranty
- Thermostat
- Two 5,500-watt stainless steel heating elements
- Brass drain valves

- GE30S08BAM** (CHOICE)
- 8-Year Warranty
 - Thermostat
 - Two 5,500-watt copper heating elements

*Household sizing based on back-to-back showers, 8 minutes long. Complete features and specifications on page 127.



GE40L08BSM (PREMIUM)
GE 36-GALLON RATED CAPACITY LOWBOY

- 10-Year Warranty
- Family size 2 to 4*
- Thermostat
- Two 5,500-watt copper heating elements
- 63-gallon First Hour Rating
- Side port

- GE40L08BAM** (CHOICE)
- 8-Year Warranty
 - Top port
 - 61-gallon First Hour Rating



GE30L08BSM (PREMIUM)
GE 26-GALLON RATED CAPACITY LOWBOY

- 10-Year Warranty
- Family size 1 to 3*
- Thermostat
- Two 5,500-watt copper heating elements
- 58-gallon First Hour Rating
- Side port

- GE30L08BAM** (CHOICE)
- 8-Year Warranty
 - Top port
 - 53-gallon First Hour Rating



COMING SOON
GG30T08BXR/GP30T08BXR
GE 30-GALLON ATMOSPHERIC GAS WATER HEATER

- Real capacity
- Leading performance
- Household size 1-3 people
- Quick recovery

ADDITIONAL 30-GALLON SKUS:
GG30S08BXR, GP30S08BXR



COMING SOON
GG40T12BXR/GP40T12BXR
GE 40-GALLON ATMOSPHERIC GAS WATER HEATER

- Real capacity
- Leading performance
- Household size 2-4 people
- Quick recovery

ADDITIONAL 40-GALLON SKUS:
GG40S08BXR, GG40T08BXR, GP40S08BXR, GP40T08BXR, GG40S10BXR, GG40T10BXR, GP40S10BXR, GP40T10BXR, GG40S12BXR, GP40S12BXR



COMING SOON
GG50T12BXR/GP50T12BXR
GE 50-GALLON ATMOSPHERIC GAS WATER HEATER

- Real capacity
- Leading performance
- Household size 3-5 people
- Quick recovery

ADDITIONAL 50-GALLON SKUS:
GG50S08BXR, GG50T08BXR, GP50T08BXR, GG50S10BXR, GG50T10BXR, GP50T10BXR

*Compared to 30 gallon electric steel tank water heaters per DOE rated gallon capacity.
 **Measured through DOE First Hour Rating.



FLEXIBLE CAPACITY ELECTRONIC WATER HEATERS

FEATURE HIGHLIGHTS



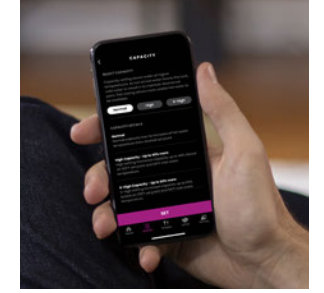
INTEGRATED, ELECTRONIC MIXING VALVE

Access additional hot water with a valve that lets users select from three capacity settings: Normal, High and X-High.



FLEXIBLE CAPACITY

Three capacity settings provide up to 60% additional hot water.*



BUILT-IN WIFI

Easily change water capacity setting, adjust temperatures, set vacation mode, schedule and receive notifications with Built-in WiFi powered by SmartHQ™.



GE50S10BMM GE 50-GALLON RATED CAPACITY

- Integrated, electronic mixing valve
- Performs like an 80-gallon on X-High setting*
- Up to 60% more hot water on X-High setting*
- Family size: 3 to 6**
- Electronic controls
- Built-in WiFi powered by SmartHQ
- Normal/Vacation modes
- 75-gallon First Hour Rating
- Two 5,500-watt stainless steel heating elements
- Brass drain valve



GE40S10BMM GE 40-GALLON RATED CAPACITY

- Integrated, electronic mixing valve
- Performs like a 64-gallon on X-High setting*
- Up to 60% more hot water on X-High setting*
- Family size: 2 to 5**
- Electronic controls
- Built-in WiFi powered by SmartHQ
- Normal/Vacation modes
- 65-gallon First Hour Rating
- Two 5,500-watt stainless steel heating elements
- Brass drain valve



GE30S10BMM GE 30-GALLON RATED CAPACITY

- Integrated, electronic mixing valve
- Performs like a 48-gallon on X-High setting*
- Up to 60% more hot water on X-High setting*
- Family size: 1 to 4**
- Electronic controls
- Built-in WiFi powered by SmartHQ
- Normal/Vacation modes
- 59-gallon First Hour Rating
- Two 5,500-watt stainless steel heating elements
- Brass drain valve

* Versus comparable water heater without mixing valve at 120° F setting and 58° F inlet water temperature.
 ** Household sizing based on back-to-back showers, 8 minutes long.
 Complete features and specifications on page 128.



TANKLESS WATER HEATERS

FEATURE HIGHLIGHTS



UNLIMITED HOT WATER ON DEMAND

UNLIMITED HOT WATER ON DEMAND

Our tankless electric water heater provides instant, continuous water flow.



SPACE SAVER

Compact design takes up significantly less space than a tank-style water heater.* Move this feature to be second. Keep image the same.



INTUITIVE DESIGN

Adjust temperature and settings with easy-use touch screen.



- GE TANKLESS ELECTRIC WHOLE HOME WATER HEATER**
- Whole Home solution
 - Instant hot water on demand
 - Touch Screen
 - Ideal for small home, apartment, condos
 - Booster for laundry, dishwasher

GE27DNHPDG
27 kW
Up to 5.4 GPM (Gallon Per Minute)*
Enough for one sink and three showers*

GE24DNHPDG
24 kW
Up to 5.3 GPM (Gallon Per Minute)*
Enough four sinks and two showers*

GE18SNHPDG
18 kW
Up to 3.8 GPM (Gallon Per Minute)*
Enough for one sink and two showers.*



- GE TANKLESS ELECTRIC POINT OF USE WATER HEATER**
- Point Of Use
 - Instant hot water on demand
 - Touch Screen and remote control
 - Ideal for under the sink and booster for a washer, dishwasher

GE15SNHPDG
14.6 kW
Up to 2.9 GPM (Gallon Per Minute)*
Enough for two sinks and one shower.*

GE11SNHPDG
11 kW
Up to 2.5 GPM (Gallon Per Minute)*
Enough for two sinks and one shower*

GE08SNHPDG
8 kW
Up to 1.7 GPM (Gallon Per Minute)*
Enough for three sinks and one shower.*



- GE TANKLESS ELECTRIC POINT OF USE WATER HEATER**
- Point Of Use
 - Instant hot water on demand
 - Touch Screen and remote control
 - Ideal for under the sink and booster for washer, dishwasher

GE06SNLPDG
5.5 kW
Up to 1.2 GPM (Gallon Per Minute)*
Enough for two sinks or one shower*

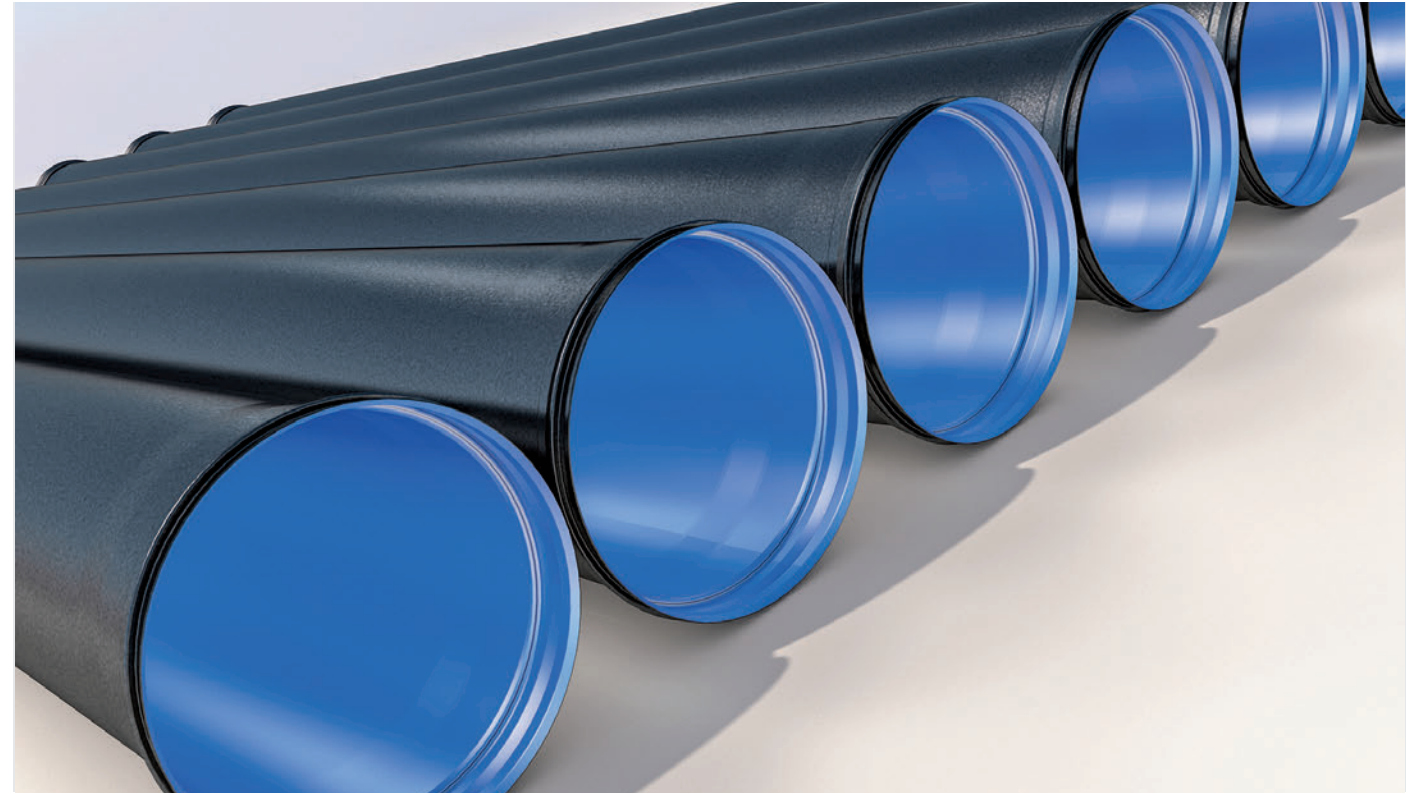
GE04SNLPDG
3.5 kW
Operates on 120V
Up to 0.7 GPM (Gallon Per Minute)*
Enough for one sink*

*Results are based on 72° F inlet water temperature and 105° F outlet water temperature. Complete features and specifications on page 128.



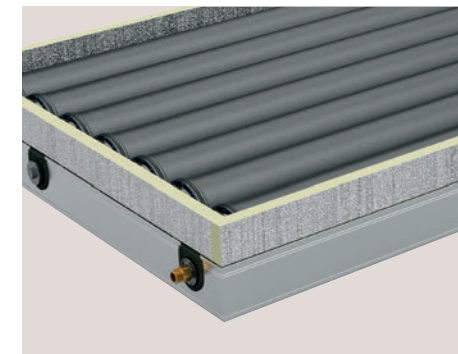
GEOSPRING™ SOLAR WATER HEATERS

FEATURE HIGHLIGHTS



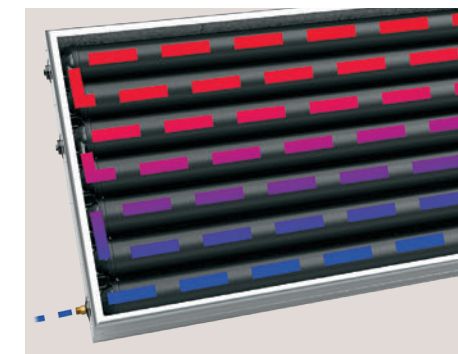
INTERNAL TANK COATING

Resilient internal coating offers maximum corrosion resistance and trouble-free performance.



STORAGE PIPES

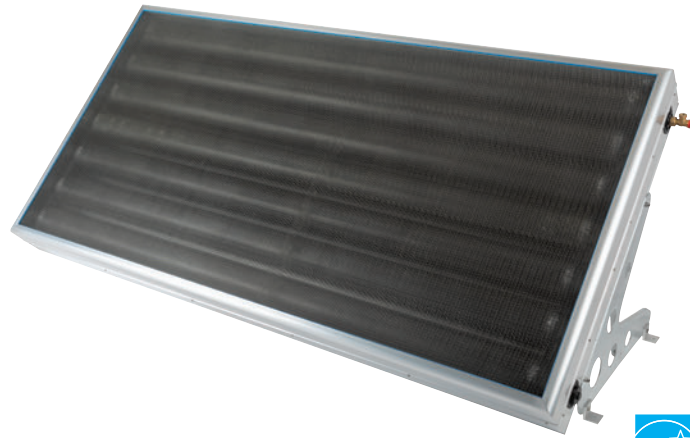
An integrated solar collector allows the tank to maintain hot water temperatures even if the sun isn't shining.



SERPENTINE SYSTEM

Water is heated and stored directly in the solar collector, making hot water available as soon as it is heated by the sun.

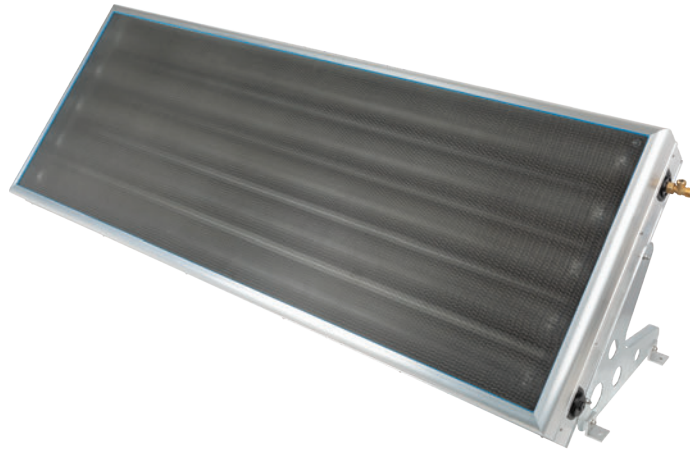
GEOSPRING™ SOLAR WATER HEATERS



GT50C10BAM

GE 51-GALLON WITH INTEGRATED COLLECTOR STORAGE

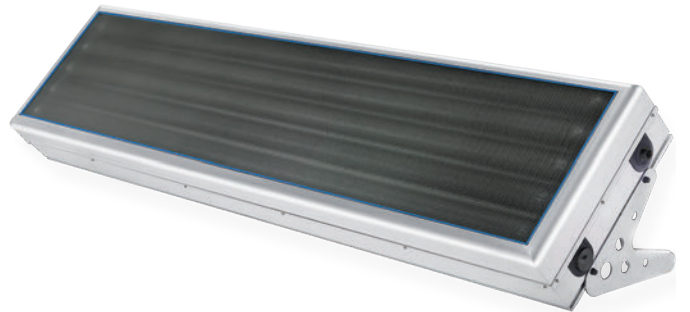
- GeoSpring Solar technology
- Solar glass for efficient water heating
- Clear heat insulation delivers maximum heat retention
- Integrated storage pipes maintain temperatures even when the sun is not shining
- Serpentine system makes hot water available immediately
- Internal tank coating offers maximum corrosion resistance



GT40C10BAM

GE 38-GALLON WITH INTEGRATED COLLECTOR STORAGE

- GeoSpring Solar technology
- Solar glass for efficient water heating
- Clear heat insulation delivers maximum heat retention
- Integrated storage pipes maintain temperatures even when the sun is not shining
- Serpentine system makes hot water available immediately
- Internal tank coating offers maximum corrosion resistance



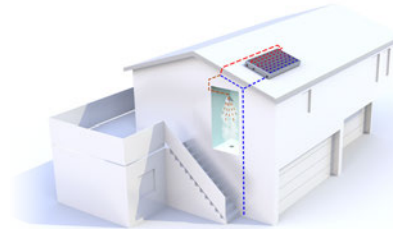
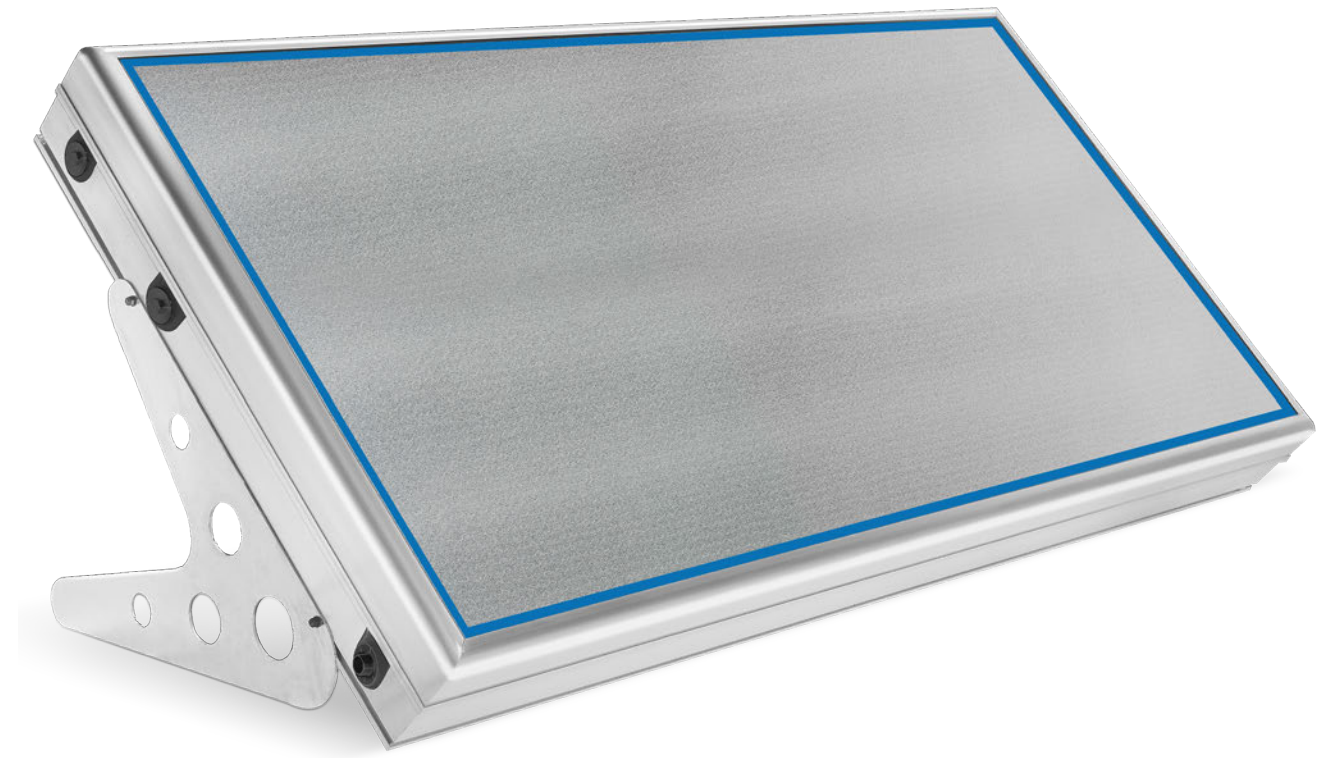
GT25C10BAM

GE 24-GALLON WITH INTEGRATED COLLECTOR STORAGE

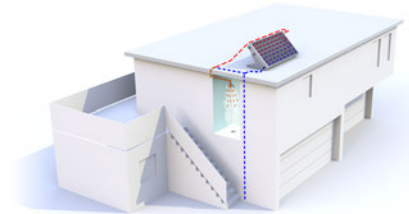
- GeoSpring Solar technology
- Solar glass for efficient water heating
- Clear heat insulation delivers maximum heat retention
- Integrated storage pipes maintain temperatures even when the sun is not shining
- Serpentine system makes hot water available immediately
- Internal tank coating offers maximum corrosion resistance

ONE-OF-A-KIND DESIGN FOR VERSATILE INSTALLATION

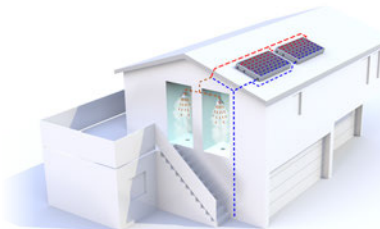
Accommodate any roof style with a unit that's easy to set up.



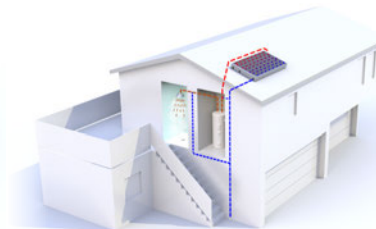
Pitched roof installation



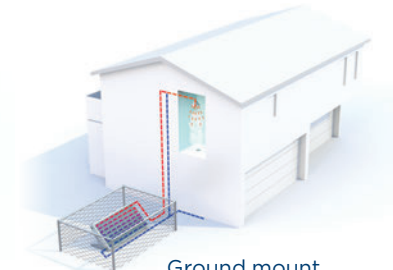
Flat roof installation



Connected in parallel installation

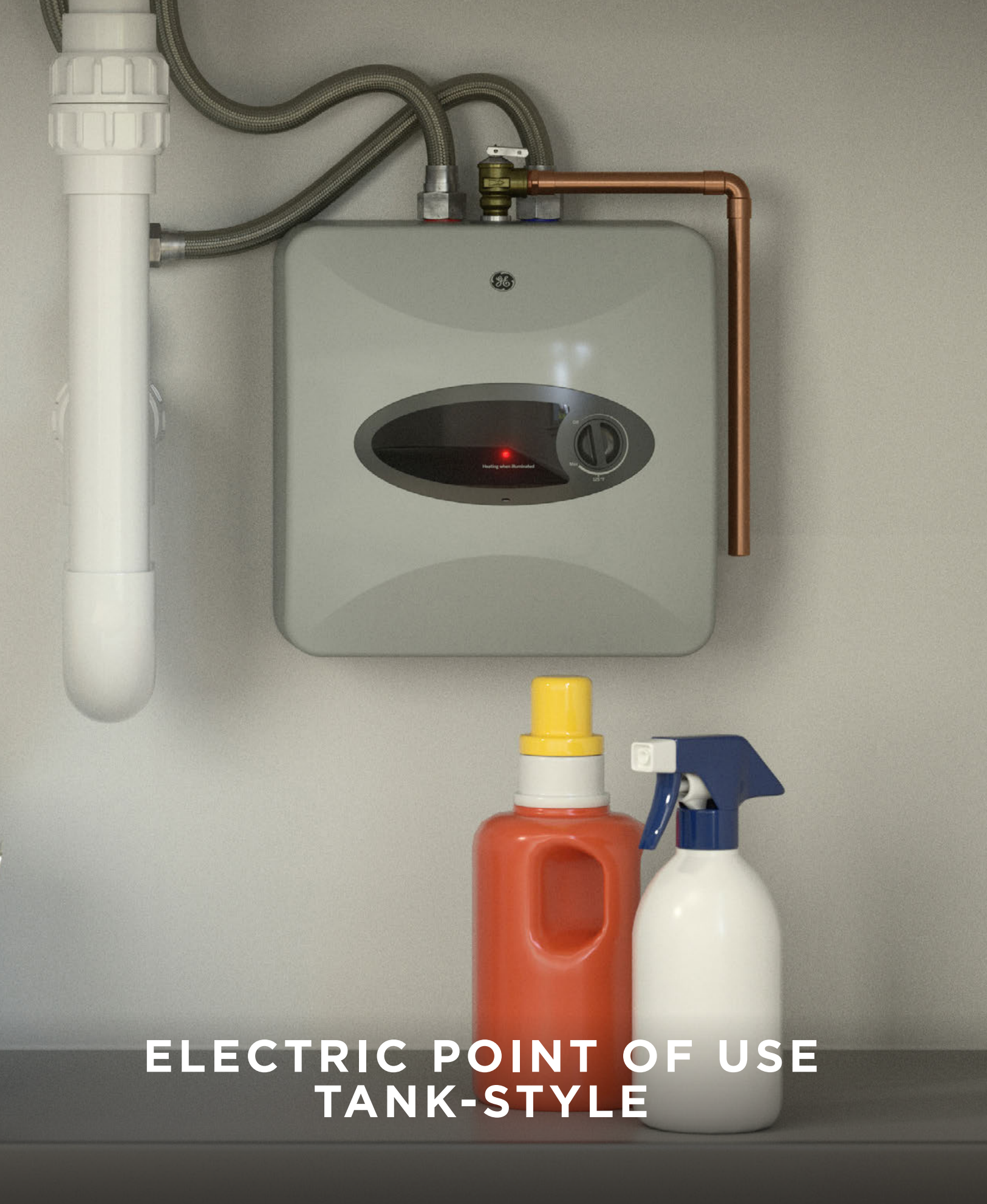


Combined with additional storage tank installation



Ground mount installation

Complete features and specifications on page 129.
*Applies to 51-gallon model when paired with a tankless gas water heater.



ELECTRIC POINT OF USE TANK-STYLE

FEATURE HIGHLIGHTS



WHOLE HOME FLEXIBILITY

Installation options provide hot water to a specific hookup or to a small house, condo or apartment.



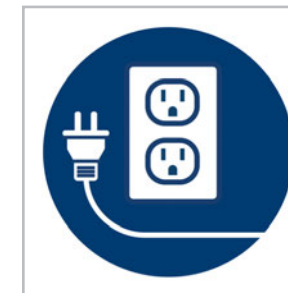
IDEAL LOCATION

Place under the kitchen, bathroom and pantry sinks.



COMPACT DESIGN

Make the most of tight spaces with a water heater that fits everywhere.



STRAIGHTFORWARD CONNECTION

The heater connects right into a 120-Volt supply.



COMING SOON
GE20P08BAR
18-GALLON GE ELECTRIC POINT OF USE TANK-STYLE

- Whole home flexibility
- Ideal location
- Compact design
- Straightforward connection
- Stainless steel heating element
- Anode rod
- Optional 6' cord included



COMING SOON
GE10P08BAR
10-GALLON GE ELECTRIC POINT OF USE TANK-STYLE

- Point of use
- Ideal location
- Compact design
- Straightforward connection
- Stainless steel heating element
- Anode rod
- Optional 6' cord included



COMING SOON
GE06P08BAR
6-GALLON GE ELECTRIC POINT OF USE TANK-STYLE

- Point of use
- Ideal location
- Compact design
- Straightforward connection
- Stainless steel heating element
- Anode rod
- Optional 6' cord included



COMING SOON
GE02P08BAR
2.5-GALLON GE ELECTRIC POINT OF USE TANK-STYLE

- Point of use
- Ideal location
- Compact design
- Straightforward connection
- Stainless steel heating element
- Anode rod
- Factory-installed 6' cord



WATER TREATMENT

We offer a variety of water treatment options to provide clean, healthy, better-tasting water anywhere in your home. Our Smart water treatment solutions, including water filtration and softening, provide peace of mind through leak detection capability and remote water shutoff to the entire home.

In 1935, we invented the Garbage Disposall®. Today, we offer a variety of disposers that are engineered with a higher torque and a higher RPM grind speed to prevent jamming.



KEY TAKEAWAYS

- Innovative features like built-in WiFi with water flow alerts & remote shutoff provide peace of mind
- Reverse Osmosis from GEA features triple-stage filtration that reduces 95 impurities from your drinking water, including lead
- Disposers are quick and simple to install with Easy Mount



WATER SOFTENERS

FEATURE HIGHLIGHTS



CUSTOM SELECT™ BLENDING VALVE

Allows easy selection of specific water softness levels to enjoy cleaner-feeling skin.



WATER FLOW ALERTS

Receive alerts to your smartphone when there's a potential leak or running faucet.*



REMOTE WATER SHUTOFF

Shut off your water from anywhere using your smart device.*



SALT SAVER

Reduces salt consumption and requires less time maintaining the system.

*Requires WiFi signal at filter location. Not all features available on all models.

WATER SOFTENERS



GXSF30V GE WATER SOFTENER

- GE SmartSoft™ technology ensures there is always plenty of softened water available by "learning" a family's water-use patterns
- Reduces scale, protects appliances/water heater, results in softer, brighter clothing
- **30,100 grain capacity**
- Uses up to 20% less water*
- Salt capacity: 200 lbs.
- Plumbing connection up to 1"



GXSH40V GE WATER SOFTENER

- GE Appliances' Custom Select™ blending valve allows you to select how soft you want your water
- GE SmartSoft technology ensures there is always plenty of softened water available by "learning" a family's water-use patterns
- GE Appliances' Salt Saver helps reduce salt consumption
- Reduces scale, protects appliances/water heater, results in softer, brighter clothing
- **40,000 grain capacity**
- Up-front electronic controls with status indicator light
- Self-cleaning sediment filter protects your home's plumbing
- Plumbing connection up to 1-1/4"



GXSH45V GE WATER SOFTENER

- GE Appliances' Custom Select blending valve allows you to select how soft you want your water
- GE SmartSoft technology ensures there is always plenty of softened water available by "learning" a family's water-use patterns
- GE Appliances' Salt Saver helps reduce salt consumption
- Reduces scale, protects appliances/water heater, results in softer, brighter clothing
- **45,100 grain capacity**
- Up-front electronic controls with status indicator light
- Uses up to 35% less water*
- Self-cleaning sediment filter
- Salt capacity: 230 lbs.
- Plumbing connection up to 1-1/4"



GXSHC40N GE WATER SOFTENER

- **Built-in WiFi powered by SmartHQ™**
- **Flow alerts—WiFi**
- **Remote water shutoff—WiFi**
- GE Appliances' Custom Select blending valve allows you to select how soft you want your water
- GE SmartSoft technology ensures there is always plenty of softened water available by "learning" a family's water-use patterns
- GE Appliances' Salt Saver helps reduce salt consumption
- Reduces scale, protects appliances/water heater, results in softer, brighter clothing
- **Low salt reminders—WiFi**
- **Water consumption tracking—WiFi**
- **40,000 grain capacity**
- Up-front electronic controls with status indicator light
- Self-cleaning sediment filter protects your home's plumbing
- Plumbing connection up to 1-1/4"



GXMH31H GE WATER SOFTENER & FILTER IN ONE

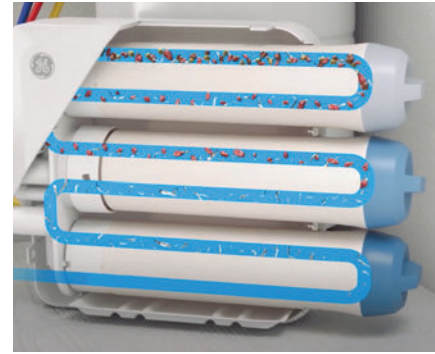
- **Reduces chlorine taste and odor with built-in water filtration**
- GE Appliances' Custom Select blending valve allows you to select how soft you want your water
- GE SmartSoft technology ensures there is always plenty of softened water available by "learning" a family's water-use patterns.
- GE Appliances' Salt Saver helps reduce salt consumption
- Reduces scale, protects appliances/water heater, results in softer, brighter clothing
- **31,100 grain capacity**
- Up-front electronic controls with status indicator light
- Self-cleaning sediment filter
- Salt capacity: 230 lbs.
- Plumbing connection up to 1-1/4"

*Versus previous GE Appliances water softeners and WQA water usage studies. Complete features and specifications on page 123.



UNDER SINK WATER FILTRATION

FEATURE HIGHLIGHTS



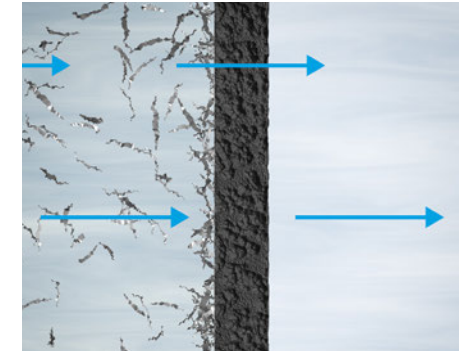
TRIPLE-STAGE FILTRATION

Our triple-stage filtration process reduces 95 impurities from your drinking water, including lead.



BETTER-TASTING WATER

Filtered water improves the flavor of coffee, tea, other beverages and food.



PREMIUM FILTRATION

Removes impurities such as lead, PFOS, PFOA, select pharmaceuticals and more.



GNRQ18NBN GE REVERSE OSMOSIS FILTRATION SYSTEM

- Reverse osmosis triple-stage filtration—water is filtered 3 times
- **Reduces 95 impurities that can be found in drinking water, including lead, PFOA/PFOS***
- **Small footprint**
- NSF/ANSI certified
- **Easy-change filter—filter in a snap with zero mess thanks to a twist/lock design**
- Easy install
- Filters included
- Designer brushed nickel faucet
- Replacement filters: FQ18MN and FQ18PN



GNK285JBL GE HIGH-FLOW FILTRATION SYSTEM

- **Dual-flow filtration process—1.1 gallons per minute**
- Lead reduction
- Filtered water through existing faucet
- Dedicated controller turns filtration on/off
- Quick-replace filter—no water shutoff needed
- Recommended filter replacement every 6 months
- System includes: Filtration system, dual-flow filters, chrome filtration controller, batteries, tubing & fittings
- Replacement filter: FQK2J



*Impurities not necessarily in all users' water.

Complete features and specifications on pages 124-125. Not all features available on all models.

Bold = feature upgrade from previous model.



WHOLE HOUSE FILTRATION

FEATURE HIGHLIGHTS



WATER FLOW ALERTS
Receive alerts to your smartphone when there's a potential leak or running faucet.**



REMOTE SHUTOFF
Shut off your water from anywhere using your smart device.**



EASY INSTALLATION
System installs in minutes with push-to-connect fittings and a rotating pivot head that fits both horizontal or vertical configurations.



GXWH70M

GE SMART WHOLE HOUSE STANDARD FLOW FILTRATION SYSTEM

- **Built-in WiFi powered by SmartHQ™ (leak detection, remote water shutoff, consumption tracking, filter change reminders)**
- **Lead reduction with FTHLM**
- High or standard flow
- Premium filtration (filter sold separately)
- Easy Install (push-to-connect fittings)
- 3-position valve with bypass option for drier filter change
- Filter not included
- Compatible filters:
FTHLM (Premium)
FTHM (Advanced)
FTHPM (Basic)

- PREMIUM
- ADVANCED
- BASIC

*Impurities not necessarily in all users' water.
**Requires WiFi signal at filter location.

Standard flow = 3/4" plumbing. High flow = 1" plumbing
Complete features and specifications on pages 124-125.
Bold = feature upgrade from previous model.



DISPOSERS & COMPACTORS

FEATURE HIGHLIGHTS



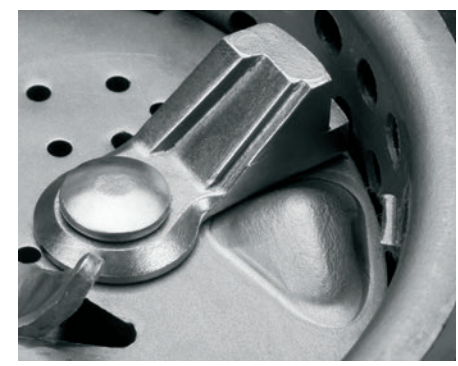
POWER GRINDING 1/2-HP MOTOR

Quickly hits max speed and high torque so foods are less likely to jam or clog.



EASY INSTALLATION

The 3-bolt system or easy-mount system with optional 3-bolt adaptor makes installation quick and simple.



STAINLESS STEEL GRINDING IMPELLERS

Durable, rust-resistant stainless steel grinding components stay sharp longer than other metals.



SEPTIC SAFE

Guaranteed to be safe for properly maintained septic systems.

Not all features available on all models.

DISPOSERS



GFC1020N

GE CONTINUOUS-FEED DISPOSER

- Power Grinding 1 HP motor
- Over 2,800 RPM
- Easy Mount installation
- 3-bolt-mount adapter kit Included
- Drain-Boost technology
- Stainless steel grinding components
- Optional accessory power cord sold separately (model WC12X10002)



GFC720N

GE CONTINUOUS-FEED DISPOSER

- Power Grinding 3/4 HP motor
- Over 2,700 RPM
- Easy Mount installation
- 3-bolt-mount adapter kit Included
- Drain-Boost technology
- Stainless steel grinding components
- Optional accessory power cord sold separately (model WC12X10002)



GFC530N

GE CONTINUOUS-FEED DISPOSER

- Power Grinding 1/2 HP motor
- Over 2,600 RPM
- Easy Mount installation
- 3-bolt-mount adapter kit Included
- Drain-Boost technology
- **Stainless steel grinding components**
- Optional accessory power cord sold separately (model WC12X10002)



GREEN05P

GE CONTINUOUS-FEED DISPOSER

- Power Grinding 1/2 HP motor
- Over 2,600 RPM
- 3-bolt mount design
- Attached power cord
- High-power, finer grind
- Jam-free guarantee**
- Stainless steel grinding components

GFC535N*

Similar to GFC530N with attached power cord.



GFC520N

GE CONTINUOUS-FEED DISPOSER

- Power Grinding 1/2 HP motor
- Over 2,600 RPM
- Easy Mount installation
- 3-bolt-mount adapter kit Included
- Drain-Boost technology
- Galvanized steel grinding blades
- Optional accessory power cord sold separately (model WC12X10002)



GFC320N

GE CONTINUOUS-FEED DISPOSER

- Power Grinding 1/3 HP motor
- Over 2,300 RPM
- Easy Mount installation
- 3-bolt-mount adapter kit Included
- Drain-Boost technology
- Galvanized steel grinding blades
- Optional accessory power cord sold separately (model WC12X10002)

GFC525N*

Similar to GFC520N with attached power cord.



GFB760N

GE BATCH-FEED DISPOSER

- Power Grinding 3/4 HP motor
- Over 2,700 RPM
- Easy Mount installation
- 3-bolt-mount adapter kit Included
- Drain-Boost technology
- Magnetic sink stopper for activation
- Stainless steel grinding components
- Optional accessory power cord sold separately (model WC12X10002)

*Optional accessory 3-bolt-mount adapter kit (PM3X214)

**Applies when used according to owner's manual.

COMPACTOR

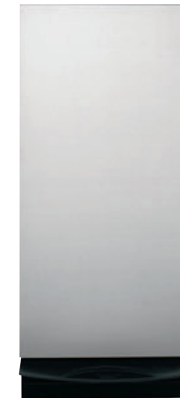


UCG1520N

GE BUILT-IN COMPACTOR

- Hidden controls
- Built-in only
- 1.4 cu. ft. capacity
- 1/3 HP motor
- Removable key lock
- Toe pedal opener
- Reduces volume by 75%

- Stainless - UCG1520NSS
- White - UCG1500NWW
- Black - UCG1500NBB
- Panel-ready - UCG1510NII



COMMERCIAL AC

DUCTLESS

VRF

WATER HEATERS

WATER TREATMENT

ROOM AC

SPECIFICATIONS

LIMITED WARRANTY INFORMATION

(See written warranty for complete details.)

The condensed list below is a convenient overview of the written warranties offered on various GE appliances described in this catalog for products manufactured on or after January 1, 2006. For complete warranty details on a specific GE Appliances model, contact your nearest GE Appliances supplier, or call GE Appliances Factory Service, toll-free, 800.GE.CARES (800-432-2737).

GE WATER FILTERS

For the period of	GE Appliances will replace
30 days From the date of the original purchase	Any part of the water filter cartridge which fails due to a defect in materials or workmanship during this limited thirty-day warranty .

GE COMPACTORS

For the period of	GE Appliances will replace
One year From the date of the original purchase	Any part in the compactor which fails due to a defect in materials or workmanship. During this limited one-year warranty , GE Appliances will provide, free of charge , all labor and related service costs to replace the defective part.

GE DISPOSERS

For the period of	GE Appliances will replace
One year From the date of the original purchase	Models GFC320 and GFC325: The entire disposer if there is a defect in materials or workmanship relating to functional parts only (appearance parts are excluded). During this limited one-year warranty , GE Appliances will also provide, free of charge , all labor charges related to replacing the original disposer along with the replacement disposer within the first year.
Additional one year From the date of the original purchase	Models GFC520V, GFC525V: If there is a defect in materials or workmanship relating to functional parts only (appearance parts are excluded). During this one-year extended limited warranty period , you will be responsible for all installation charges related to the replacement disposer.
Additional two years From the date of the original purchase	Models GFC530V, GFC535V: If there is a defect in materials or workmanship relating to functional parts only (appearance parts are excluded). During this two-year extended limited warranty period , you will be responsible for all installation charges related to the replacement disposer.
Additional four years From the date of the original purchase	Models GFC720V, GFB760V: If there is a defect in materials or workmanship relating to functional parts only (appearance parts are excluded). During this four-year extended limited warranty period , you will be responsible for all installation charges related to the replacement disposer.
Additional six years From the date of the original purchase	Model GFC1020V: If there is a defect in materials or workmanship relating to functional parts only (appearance parts are excluded). During this six-year extended limited warranty period , you will be responsible for all installation charges related to the replacement disposer.
Three years From the date of the original purchase	Model GREEN05P: The entire disposer if there is a defect in materials or workmanship relating to functional parts only (appearance parts are excluded). During this limited three-year warranty , GE Appliances will also provide, free of charge , all labor charges related to replacing the original disposer along with the replacement disposer within the first year.

GE ELECTRIC WATER HEATERS

For the period of	GE Appliances will replace
One year From the date of the original purchase	Any factory specified part of the Water Heater which fails due to a defect in materials or workmanship. During this limited one-year warranty , GE Appliances will also provide, free of charge, all labor and related service to replace the defective part, or will reimburse consumers for documented out-of-pocket costs for parts and/or labor for professional service at a predetermined rate as found on the GE Appliances Website GEAppliances.com/waterheater, unless service provided to replace defective parts is determined to be a result of improper installation or maintenance.
Second through Eighth, Tenth or Twelfth Year From the date of the original purchase	Any part of the Water Heater which fails due to a defect in materials or workmanship. During this limited second through the end of the warranty period , labor and related service to replace the defective part are not included. <small>*Warranty is based on the 6th and 7th digit of model number located on rating plate (e.g.: GE50T08BAM has a part warranty of 8 years).</small>

GE SOLAR WATER HEATERS

For the period of	GE Appliances will replace
One year From the date of the original purchase	Any part in the Water Heater which fails due to a defect in materials or workmanship. During this limited one-year warranty , GE Appliances will reimburse registered service providers, or will reimburse consumers for documented out-of-pocket costs for parts and/or labor for professional service at a predetermined rate as found on the GE Appliances Website GEAppliances.com/waterheater, unless service provided to replace defective parts is determined to be a result of improper installation or maintenance.
Second through fifth year From the date of the original purchase	Any part in the Water Heater which fails due to a defect in materials or workmanship. During this limited second through year five warranty period , labor and related service to replace the defective part are not included.
Sixth through tenth year From the date of the original purchase	50% of the cost of any part of the water heater which fails due to a defect in materials or workmanship. During this sixth through the end of the warranty period , labor and related service to replace the defective part are not included. <small>Warranty is based on the 6th and 7th digit of model number located on rating plate (e.g.: GE50T10BAM has a part warranty of 10 years).</small>

GE WATER SOFTENERS

For the period of	GE Appliances will replace
One year From the date of the original purchase	Any part of the Water Softening System which fails due to a defect in materials or workmanship. During this limited one-year warranty , GE Appliances will provide, free of charge , all labor and related service costs to replace the defective part.
Second through third year From the date of the original purchase	Electronic Monitor , if the Electronic Monitor fails due to a defect in materials or workmanship. During this additional two-year limited warranty , you will be responsible for any labor and related service costs.
Second through tenth year From the date of the original purchase	Cabinet (Brine Tank) and Resin Tank , if either of these parts fail due to a defect in materials or workmanship. During this additional nine-year limited warranty , you will be responsible for any labor and related service costs.

GE REVERSE OSMOSIS FILTRATION SYSTEMS

For the period of	GE Appliances will replace
One year From the date of the original purchase	Any part of the Reverse Osmosis Filtration System (excluding filters) which fails due to a defect in materials or workmanship. During this limited one-year warranty , GE Appliances will provide, free of charge , all labor and related service costs to replace the defective part.

GE DUAL-STAGE AND SINGLE-STAGE WATER FILTRATION AND WHOLE HOUSE FILTRATION

For the period of	GE Appliances will replace
One year From the date of the original purchase	Any part of the Water Filtration System (excluding filters) which fails due to a defect in materials or workmanship. During this limited one-year warranty , GE Appliances will provide, free of charge , all labor and related service costs to replace the defective part.

GE DEHUMIDIFIERS

For the period of	GE Appliances will replace
One year From the date of the original purchase	Replacement, repair or refund of the original retail price for any product which fails due to a defect in materials or workmanship . If the unit is exchanged, the replacement unit is warranted for the remainder of your product's original one-year warranty period . GE will, at its sole discretion, replace the product with a product of the same or comparable functionality and quality or refund the original retail price .

GE AIR CONDITIONERS

For the period of	GE Appliances will replace
One year From the date of the original purchase	Replacement, repair, or refund of the original retail price for any product which fails due to a defect in materials or workmanship. If the unit is exchanged, the replacement unit is warranted for the remainder of your product's original one-year warranty period . GE Appliances will, at its sole discretion, replace the product with a product of the same or comparable functionality and quality or refund the original retail price.

GE AIR CONDITIONERS

For the period of	GE Appliances will replace
Two years From the date of the original purchase	Any part of the air conditioner which fails due to a defect in materials or workmanship. During this limited two-year warranty , GE Appliances will provide, free of charge , all labor and related service costs to replace the defective part.

GE AIR CONDITIONERS

For the period of	GE Appliances will replace
One year From the date of the original purchase	Any part of the air conditioner which fails due to a defect in materials or workmanship. During this limited one-year warranty , GE Appliances will provide, free of charge , all labor and related service costs to replace the defective part.
Five years From the date of the original purchase	Sealed Refrigerating System , if any part of the Makeup Air Module or Sealed Refrigerating System (the compressor, condenser, evaporator, and all connecting tubing) should fail due to a defect in materials or workmanship. During this limited five-year warranty , GE Appliances will provide, free of charge , all labor and related service costs to replace the defective part.
Second through fifth year (Zonline only) From the date of the original purchase	Fan Motors, Switches, Thermostat, Heater, Heater Protectors, Compressor Overload, Solenoids, Circuit Boards, Auxiliary Controls, Thermistors, Frost Controls, Freeze Sentinel, ICR Pump, Capacitors, Varistors and Indoor Blower Bearing , if any of these parts should fail due to a defect in materials or workmanship. During this additional four-year limited warranty , the customer will be responsible for any labor and related service costs.
Second through fifth year (vertical Zonline only) From the date of the original purchase	Fan Motors, Switches, Thermostat, Heater, Heater Protectors, Compressor Overload, Solenoids, Circuit Boards, Auxiliary Controls, Thermistors, Frost Controls, Freeze Sentinel , if any of these parts should fail due to a defect in materials or workmanship. During this additional four-year limited warranty , the customer will be responsible for any labor and related service costs.

GE AIR CONDITIONERS

For the period of	GE Appliances will replace
Two years From the date of the original purchase	Any part in the air conditioner which fails due to a defect in materials or workmanship. During this limited two-year warranty , GE Appliances will provide, free of charge , all labor and related service costs to replace the defective part.
Five years From the date of the original purchase	Any part of , if the Sealed Refrigerating System (compressor, condenser, evaporator, reversing valve and all connecting tubing) which fails due to a defect in materials or workmanship. During this three-year additional warranty , GE Appliances will provide, free of charge , all labor and related service costs to replace the defective part.

GE PORTABLE AIR CONDITIONER UNITS

For the period of	GE Appliances will replace
One year From the date of the original purchase	Replacement, repair or refund of the original retail price for any product which fails due to a defect in materials or workmanship . If the unit is exchanged, the replacement unit is warranted for the remainder of your product's original one-year warranty period . GE will, at its sole discretion, replace the product with a product of the same or comparable functionality and quality or refund the original retail price .

LIMITED WARRANTY INFORMATION (continued)

(See written warranty for complete details.)

HAIER AIR CONDITIONERS

WINDOW

For the period of	Haier will replace
One year from the date of the original purchase	Any part in the air conditioner which fails due to a defect in materials or workmanship. During the one-year warranty , Haier will provide, free of charge , all labor and related service costs to replace the defective part.

THROUGH-THE-WALL

For the period of	Haier will replace
One year from the date of the original purchase	Any part in the air conditioner which fails due to a defect in materials or workmanship. During the one-year warranty , Haier will provide, free of charge , all labor and related service costs to replace the defective part.

PORTABLE

For the period of	Haier will replace
One year from the date of the original purchase	Any part in the air conditioner which fails due to a defect in materials or workmanship. During the one-year warranty , Haier will provide, free of charge , all labor and related service costs to replace the defective part.

DUCTLESS

For the period of	Haier will replace
One year from the date of the original purchase	Any part in the air conditioner which fails due to a defect in materials or workmanship. During the one-year warranty , Haier will provide, free of charge , all labor and related service costs to replace the defective part.

DEHUMIDIFIERS

For the period of	Haier will replace
One year from the date of the original purchase	Any part in the dehumidifier, purchased by a consumer for home use only, which fails due to a defect in materials or workmanship. During the one-year warranty , Haier will provide, free of charge , all labor required to repair or replace the defective part.

HOTPOINT AIR CONDITIONERS

For the period of	Hotpoint will replace
One year From the date of the original purchase	Any part of the air conditioner which fails due to a defect in materials or workmanship. During this limited one-year warranty, Hotpoint will provide, free of charge, all labor and related service costs to replace the defective part.
Five years From the date of the original purchase	Any part of the sealed refrigerating system (the compressor, condenser, evaporator and all connecting tubing) which fails due to a defect in materials or workmanship. During this limited five-year warranty, Hotpoint will provide, free of charge, all labor and related service costs to replace the defective part.

FOR EACH PRODUCT LISTED

What GE Appliances will not cover:
<ul style="list-style-type: none"> Service trips to your home to teach you how to use the product. Improper installation. Replacement of house fuses or resetting of circuit breakers. Failure of the product if it is abused, misused or used for anything other than the intended purpose or used commercially. Damage to product caused by accident, fire, floods or acts of God. Incidental or consequential damage caused by possible defects with this appliance.

HOTPOINT PARTS AND ACCESSORIES

For the period of	Hotpoint will replace
One year From the date of the original purchase	If your GEA part fails because of a manufacturing defect within one year from the date of original purchase, we will provide a new or, at our option, rebuilt part without charge. Return the defective part to the vendor from whom it was purchased with a copy of the "proof of purchase." If the part is defective it will be exchanged. This warranty does not cover parts which are improperly installed, damaged, abused or used for other than the intended purpose. It does not include cost of returning the part to the vendor from which it was purchased, labor to remove, install or diagnose the failure, parts used in commercial applications, incidental or consequential damage caused by possible defects with the parts.

GE PARTS AND ACCESSORIES

For the period of	GE Appliances will replace
One year From the date of the original purchase	If your GE Appliances part fails because of a manufacturing defect within one year from the date of original purchase , we will provide a new or, at our option, rebuilt part without charge. Return the defective part to the vendor from whom it was purchased with a copy of the "proof of purchase." If the part is defective it will be exchanged. This warranty does not cover parts which are improperly installed, damaged, abused or used for other than the intended purpose. It does not include cost of returning the part to the vendor from which it was purchased, labor to remove, install or diagnose the failure, parts used in commercial applications, incidental or consequential damage caused by possible defects with the parts. Excludes water filters which offer 30-day warranty.

EXCLUSION OF IMPLIED WARRANTIES - Your sole and exclusive remedy is product repair as provided in this Limited Warranty. Any implied warranties, including the implied warranties of merchantability or fitness for a particular purpose, are limited to one year or the shortest period allowed by law.

This warranty is extended to the original purchaser and any succeeding owner for products purchased for home use within the USA. In Alaska, the One-Year Warranty excludes the cost of shipping, or service calls to your home. Some states do not allow the exclusion or limitation of incidental or consequential damages. This warranty gives you specific legal rights, and you may also have other rights which vary from state to state. To know what your legal rights are, consult your local or state consumer affairs office or your state's Attorney General.

READING NOMENCLATURES

GE WATER SOFTENING SYSTEM

G	X	S	H	C	4	O	N
Brand G=GE	Packaging N=standard X=retail	Product type MH=Mixed media, super high-flow SH=super high-flow SHC=super high-flow connected SF=high-flow	Capacity 45=45,100 grains 40=40,000 grains 31=31,100 grains 30=30,400 grains	Model year			

GE FLEXIBLE CAPACITY ELECTRONIC WATER HEATER

G	E	5	0	S	1	0	B	M	M
Brand G=GE	Fuel Type E=electric	Capacity 30=30 gallons 40=40 gallons 50=50 gallons	Size S=short	Warranty 10=10 years	Special Indicator M=Electronic controls with integrated mixing valve and WiFi	Model Year M=2018			

GE TANKLESS ELECTRIC WATER HEATER

G	E	1	1	S	N	H	P	D	G
Brand G=GE	Fuel Type E=Electric	Power 11=11 kW	Channel N=US (Common)	Model Year P=2020	Product Color DG=Diamond Gray				

GE SOLAR WATER HEATER

G	T	5	0	C	1	0	B	A	M
Brand G=GE	Fuel Type T=solar thermal	Capacity 25=25 gallons 40=40 gallons 50=50 gallons	Size C=collector, storage type	Warranty 10=10 years	Special Indicator A=mechanical controls	Model Year M=2018			

GE DISPOSER

G	F	C	7	2	0	V
Brand G=GE	FB=batch feed FC=continuous feed	Model	Model year			

GE ELECTRONIC/ELECTRIC WATER HEATER

G	E	5	0	T	1	2	B	L	M
Brand G=GE	Fuel Type E=electric	Capacity 30=30 gallons 40=40 gallons 50=50 gallons	Size L=Low boy S=short T=tall	Warranty 08=8 years 10=10 years 12=12 years	Special Indicator A=mechanical controls L=electronic controls A=top port for Low boy S=side port for Low boy	Model Year M=2018			

GE GAS WATER HEATER

G	G	5	0	T	1	2	B	X	R
Brand G=GE	Fuel Type G=natural gas P=propane	Size S=short T=tall	Warranty 08=8 years 10=10 years 12=12 years	Special Indicator 2 X=LoNox FVIR	Model Year R=2021				

GE ELECTRIC POINT OF USE WATER HEATER

G	E	2	0	P	0	8	B	A	R
Brand G=GE	Capacity 02=2.5 gallons 06=6 gallons 10=10 gallons 20=18 gallons	Size P=Point of use (120v)	Warranty 08=8 years	Special Indicator 1 B=US Standard Model	Special Indicator 2 A=US Standard Model	Model Year R=2021			

GE REVERSE OSMOSIS SYSTEM

P	N	R	Q	2	1	R	B	N
Brand P=GE G=GE	Packaging N=standard X=retail	Product Type RQ=Twist and Lock reverse osmosis RM=open housing reverse osmosis	Model Year Gallons per day	Faucet color options BL=Chrome w/Black accents BN=Brushed Nickel				

GE UNDER-THE-COUNTER FILTRATION SYSTEM

G	N	S	V	7	0	R	B	L
Brand G=GE	Packaging N=standard X=retail packaging	Product Type SV=VOC removal K2=encap, dual, sed, CT&O, lead, cysts, select VOCs, pharma UL=CTO + lead	Series 70=Black 85=encapsulated, diverter 50=encapsulated, single stage, lead/cyst, no monitor, rotary high arc faucet 01=empty open sump	Model Year	Color BL=Chrome with Black accents			

GE INLINE UNIT

G	X	R	T	Q	R
Brand G=GE	Packaging X=retail type packaging	Product Type T=chlorine, taste, and odor filter element (CTO) L=CTO & lead filter element	Product type Q=new installation—quick connect, new canister—quick connect DR=new/replacement push-to-connect fittings		

GE WHOLE HOME FILTRATION SYSTEM

G	N	W	H	3	8	S
Brand G=GE	Packaging N=standard X=retail type packaging	Product Type WH=whole home	Series 38=heavy-duty with timer 04=empty sump 20=clear sump, 3-way valve 35=heavy-duty 40=clear sump, heavy-duty, 3-way valve	Model Year		

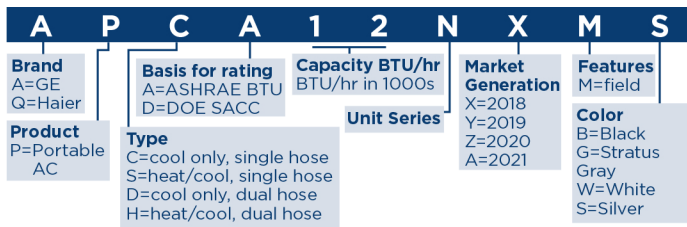
GE WINDOW AIR CONDITIONER

A	E	H	2	4	D	W
Brand A=GE P=GE Profile Q=Haier	Supplier E=Gree H=Haier	Capacity BTU/hr ##=BTU/hr in 1000s	Voltage 60Hz A or L = 115V D = 230/208V	Commercial Change Y=2019 Model Year Z=2020 Model Year		

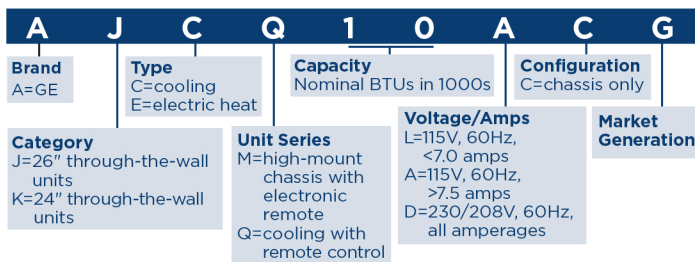
Feature Set/Distribution Channel
B=Black
C=Energy Star, WiFi
D=Energy Star, WiFi, or Low Noise
E=Heating function
F=WalMart Black WiFi
H=Electronic - Sam's Club
J=E Star - Connected
K=Sam's WiFi
L=Electronic - Home Depot
M=Electronic, Deluxe/E Star, Field
Q=Electronic controls
R=Mechanical - Sam's Club
T=Mechanical - WalMart
U=Value - Mechanical
V=Value - Mechanical
W=Electronic - WalMart
X=Heat Cool

READING NOMENCLATURES (continued)

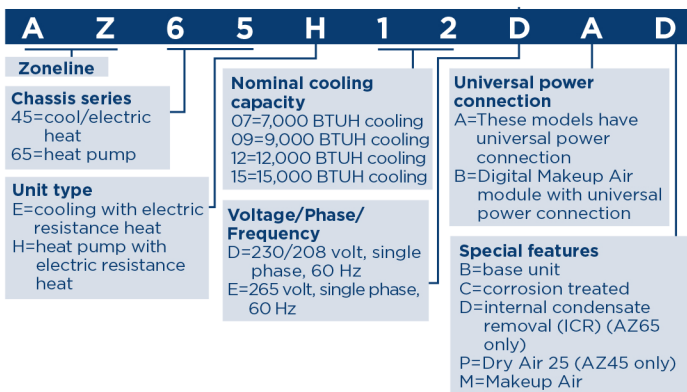
GE PORTABLE AIR CONDITIONER



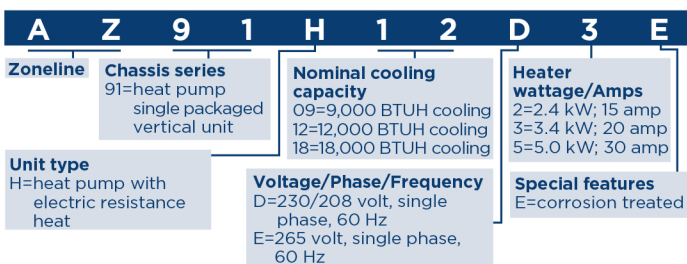
GE BUILT-IN/THROUGH-THE-WALL AIR CONDITIONER



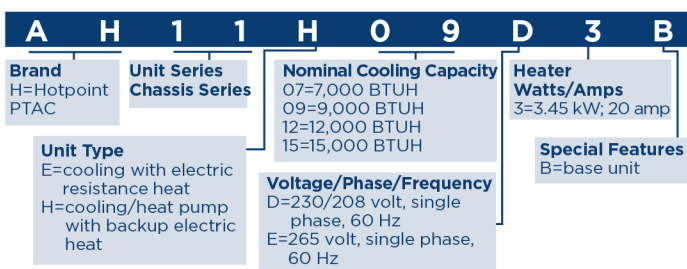
GE ZONELINE® CHASSIS



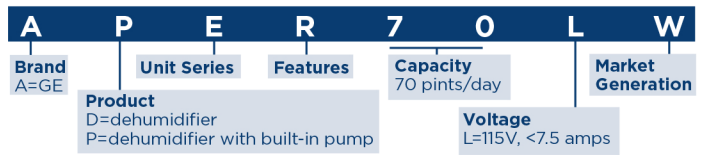
ZONELINE VERTICAL UNIT



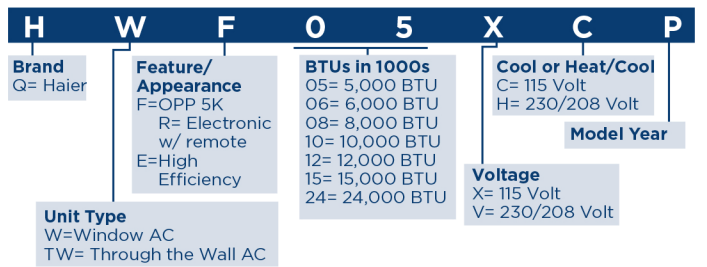
HOTPOINT® COMFORT PRODUCT



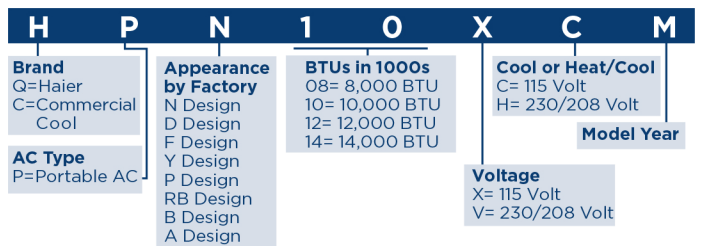
GE DEHUMIDIFIER



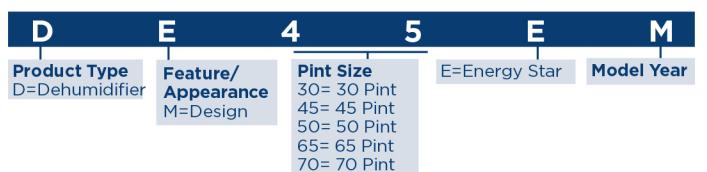
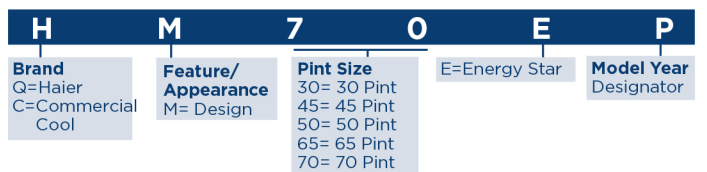
HAIER COMFORT PRODUCT



HAIER PORTABLE AIR CONDITIONER



HAIER DEHUMIDIFIER



HAIER DUCTLESS INDOOR AND OUTDOOR COMPATIBILITY CHART

OUTDOOR UNITS	HAIER					
	TEMPO	ADVANCED PLUS	ARCTIC (NEXT GEN)	FLEXFIT SINGLE	FLEXFIT MULTI	ARCTIC MULTI
1U09TE1VHA	1U09AP2VHA	1U09EH2VHDE		2U18MS2VHB	2U20EH2VHA	
1U12TE1VHA	1U12AP2VHA	1U12EH2VHDE		3U24MS2VHB	3U24EH2VHA	
1U09TE2VHA	1U15AP2VHA	1U18EH2VHDE	1U24LP2VHA	4U36MS2VHB	4U36EH2VHA	
1U12TE2VHA	1U18AP2VHA		1U36LP2VHA			
1U18TE2VHA	1U24AP2VHA		1U48LP2VHA			
1U24TE2VHA						

INDOOR UNITS

COMPATIBLE HIGHWALL INDOOR UNITS						
AW09TE1VHB	●					
AW12TE1VHB	●					
1U09TE2VHA						
1U12TE2VHA						
AW18TE2VHB	●					
AW24TE2VHB	●					
AW09ES2VHB		●				
AW12ES2VHB		●				
AW15ES2VHB		●				
AW18ES2VHB		●				
AW24ES2VHB		●				
AW09EH2VHD			●			
AW12EH2VHD			●			
AW18EH2VHD			●			
AW07EH2VHA						●
AW09EH2VHA						●
AW12EH2VHA						●
AW18EH2VHA						●
AW07LC2VHB				●		●
AW09LC2VHB				●		●
AW12LC2VHB				●		●
AW18LC2VHB				●		●
AW24LP2VHA				●		●
AW36LP2VHA				●		●
COMPATIBLE CASSETTE INDOOR UNITS						
AB09SC2VHA			●		●	●
AB12SC2VHA			●		●	●
AB18SC2VHA			●		●	●
AL24LP2VHA				●		●
AL36LP2VHA				●		●
AL48LP2VHA				●		●
COMPATIBLE SLIM DUCT INDOOR UNITS						
AD07SL2VH				●		●
AD09SL2VH				●		●
AD12SL2VH				●		●
AD18SL2VH				●		●
COMPATIBLE INDOOR MID STATIC DUCT UNITS						
USYM09UCDSA			●		●	●
USYM12UCDSA			●		●	●
USYM18UCDSA			●		●	●
USYM24UCDSA				●		●
COMPATIBLE HIGH STATIC DUCT INDOOR UNITS						
AM24LP2VHA			●		●	●
AM36LP2VHA			●		●	●
AM48LP2VHA			●		●	●
COMPATIBLE CONSOLE INDOOR UNITS						
USYF09UCDWA			●		●	●
USYF12UCDWA			●		●	●
USYF18UCDWA			●		●	●

GE WATER SOFTENERS

CAPACITY	GE				
	GXSHC40N	GXMH31H	GXSH45V	GXSH40V	GXSF30V
Capacity (grains)	40,000	31,100	45,100*	40,000*	30,100
FEATURES	<ul style="list-style-type: none"> Water Usage Tracking Water Flow Alerts Remote Water Shutoff Salt Reminders 				
WiFi connect					
Advanced filtration		●			
Efficiency (grains per lb.-salt)	5,100	4,240**	5,090**	5,100**	4,700**
Max. hardness removal (gpg)	110	120	160	110	95
Max. clear water iron reduction (ppm)	8	3	10	8	8
Resin filter type	Standard mesh	Standard mesh	Standard mesh	Standard mesh	Standard mesh
Resin quantity (cu. ft.)	1.1	.98	1.25	1.1	.83
Activated charcoal quantity (cu. ft)	N/A	.26	N/A	N/A	N/A
Resin tank size (in.)	9 x 40	10 x 40	10 x 40	9 x 40	9 x 35
Salt capacity (lbs.)	230	230	230	230	200
Regeneration time (min.)	94 to 134	105 to 152	105 to 152	94 to 134	73 to 104
Service flow rate (at 15 psi drop)	9.5	8	9.5	9.5	7.5
Installation pack	●	●	●	●	●
Batteryless memory	●	●	●	●	●
Electronic controls	●	●	●	●	●
SmartSoft™ technology	●	●	●	●	●
Custom Select™ blending valve	●	●	●	●	●
Salt Saver button/light	Automatic	●	●	●	●
"Days to Empty" indicator	●	●	●	●	●
Low salt indicator	●	●	●	●	●
Status light indicator	●	●	●	●	●
Sediment filter	●	●	●	●	●
Audible alarm	●	●	●	●	●
Advanced system monitor	●	●	●	●	●
Valve size	High flow	High flow	High flow	High flow	Standard flow
Plumbing connections	Up to 1-1/4"	Up to 1-1/4"	Up to 1-1/4"	Up to 1-1/4"	Up to 1"
Water supply maximum clear water iron (ppm)***	8	3	10	8	8
Water pressure limits (minimum-maximum psi)†	20-125	20-125	20-125	20-125	20-125
Rated capacity at chlorine concentration††	.050 ppm	2,282,000 gal.			
	.075 ppm	1,520,000 gal.			
	1.0 ppm	1,140,000 gal.			
	1.5 ppm	760,000 gal.			
	2.0 ppm	570,000 gal.			
APPEARANCE					
Style	Sculpted	Sculpted-tall	Sculpted-tall	Sculpted-tall	Sculpted-short
Unit color/trim	Light blue	Light gray/Blue	Light gray/Dark gray	Light gray/Dark gray	Light gray/Dark gray
Electronic demand driven	●	●	●	●	●
WEIGHTS & DIMENSIONS					
Approx. ship. wt. (lbs.)	107	119	119	105	91
Overall W x H x D (in.)	14-7/8 x 47-5/8 x 22-7/16	14-7/16 x 47-5/8 x 22-7/16	14-7/16 x 47-5/8 x 22-7/16	14-7/16 x 47-5/8 x 22-7/16	14-7/16 x 43-1/4 x 22-7/16
POWER/RATINGS					
Electrical rating	24V, 60Hz	24V, 60Hz	24V, 60Hz	24V, 60Hz	24V, 60Hz

This system conforms to NSF/ANSI 42 & 44 for the specific performance claims as verified and substantiated by test data.
 *Testing was performed using pellet grade sodium chloride as the regenerate salt.
 **Efficiency rating is valid only at the lowest stated salt damage. These softeners were efficiency rated according to NSF/ANSI 44.
 ***Extent of iron removal may vary with conditions. The capacity to reduce clear water iron is substantiated by WQA test data. State of Wisconsin requires additional treatment if water supply contains greater than 5 ppm clear water iron.
 †Canada working pressure limits: 1.4-7.0 kg/cm2.
 ††Typical residential chlorine concentration is 0.5 to 1.0 ppm.
Important: All units must be installed according to local codes.
Note: Before installing, see installation instructions packed with product for complete details, or call GE QuickSpecs 800-432-3729.

GE UNDER SINK REVERSE OSMOSIS FILTRATION SYSTEMS

GE	
GXRQ18NBN GRNQ18NBN	
CAPACITY	
Tank size (gallons)	3
FEATURES	
Faucet	Brushed Nickel
Faucet color	Brushed Nickel
Faucet monitor	Electronic timer
Faucet mounting	Vertical
Filter change indicator	LED
Feed water pressure (psi)	40 Min.-100 Max.
Feed water temperature	40°-100°F
Maximum feed water TDS (ppm)	2,000
Maximum hardness (@ 6.9 pH)	10 grains
Feed water pH limits	4-10
Daily production rate per NSF 58 (gallons per day)	
Process water used (per gal.)	10.4
Auto shut-off	●
FILTERS & MEMBRANE	
Quick-Replace filter design	●
RO membrane	FQ18MN
Filters	FQ18MN/FQ18PN
Filter life	6 months
Filtration level	Premium
Impurities reduced	95 impurities See chart below.
Fitting style	Push-to-connect
Water inlet valve	Saddle valve
Undersink installation kit	●
FILTER APPEARANCE	
Style	Compression
Unit color	White
Filter housing	White
Mounting bracket	Vertical
WEIGHTS & DIMENSIONS	
Approx. shipping weight (lbs.)	14.2
Overall W x H x D (in.)	9-1/4 x 3-5/8 x 12-1/2 14 x 9 x 9
POWER/RATINGS	
Faucet monitor power requirement	1 CR2032 lithium 3v (included)

*Theoretical tank capacity. When tested according to NSF/ANSI Standard 58 at 50 psig inlet pressure, tank capacity is 2.3 gallons.
 **Feed water = 50 psig, 77°F, pH = 7.5 ± 5 and 750 ppm TDS as sodium chloride. Product water produced, amount of waste and percent rejection will vary with changes in pressure, temperature and total dissolved solids. Feed water over 10 grains of hardness may affect performance of the filtration system.

GXRQ18NBN (Impurities Reduced)

Chlorine Taste and Odor, Particulates (Sediment)	Carbofuran	(haloketones)
Ammonium	Carbon Tetrachloride	1,1,1-trichloroethane
Asbestos	Chlorobenzene	1,1,2,2-Tetrachloroethylene
Arsenic	Chlorodibromomethane (trihalomethanes)	1,1,2-trichloroethane
Barium	Chloroform	1,1-dichloro-2-propanone (haloketones)
Bicarbonate	(trihalomethanes)	1,1-dichloroethylene
Bromide	Chloropicrin	1,2,4-Trichlorobenzene
Cadmium	cis-1,2-dichloroethylene	1,2-dichloroethane
Chloride	DEET	1,2-dichloropropane
Chromium (hexavalent)	cis-1,3-dichloropropylene	2,4,5-TP (silvex)
Chromium (trivalent)	Dibromoacetonitrile (haloacetonitrile)	2,4-D
Copper	Hexachlorocyclopentadiene	
Cysts	Dibromochloropropane	Ibuprofen
Fluoride	Dichloroacetonitrile (haloacetonitrile)	Lindane
Lead	Linuron	
Magnesium	Dinoseb	MTBE
Nitrate	Endrin	Meprobamate
Nitrite	Estrone	Methoxychlor
Radium 226/228	Ethylbenzene	Metolachlor
Selenium	Ethylene dibromide	Naproxen
Sodium	Heptachlor	Nonyl phenol
Sulfate	Heptachlor epoxide	o-Dichlorobenzene
Tannin	Hexachlorobutadiene	p-Dichlorobenzene
TDS	Simazine	PFOA
Turbidity	Styrene	PFOS
Zinc	TCEP	Pentachlorophenol
Alachlor	TCPP	Phenytol
Atrazine	Tetrachloroethylene	
Atenolol	Toluene	
Benzene	Trans-1,2-dichloroethylene	
Bisphenol A	Tribromoacetic acid	
Bromochloroacetonitrile (haloacetonitrile)	Trichloroacetonitrile (haloacetonitrile)	
Bromodichloromethane (trihalomethanes)	Trichloroethylene	
Bromoform	Trimethoprim	
(trihalomethanes)	Xylenes VOC Surrogate	
Carbamazepine	1,1,1-trichloro-2-propanone	

GE WHOLE HOUSE FILTERS

FILTER TYPE	GXWH50/70 REPLACEMENT FILTERS		
	FTHLM	FTHTM	FTHPM
Filter capacity (gallons)	15,000	20,000	15,000
Filter life	3 months	3 months	3 months
Filtration level	Premium	Advanced	Basic
Lead reduction	●		
Chlorine: Taste & Odor reduction	●	●	
Particulate reduction	0.5 micron	5 micron	30 micron
Sand reduction	●	●	●
Soil reduction	●	●	●
Silt reduction	●	●	●
Sediment reduction	●	●	●

GE UNDER SINK FILTRATION SYSTEMS

QUICK-REPLACE FILTER SYSTEMS	
GXX285JBL GNK285KBL	
FEATURES	
Faucet	Filtration controller
Filtration controller	Chrome
Faucet monitor	Electronic timer
Faucet mounting	Above sink
Filter change indicator	Red blinking flash
Feed water pressure (psi)	35 min.-120 max.
Feed water temperature	33°-100°F
Filtered water flow (gpm)	1.1
FILTERS & MEMBRANE	
Quick-Replace filter design	●
Filter	FQK2J
Filter cartridges	Engineered carbon blocks
Filter capacity	300 gallons
Filtration level	Advanced
Filter life	6 months
Pharmaceutical reduction	Select pharmaceuticals
VOC reduction (%)	Select VOCs
Lead reduction (%)	99.3
Cyst reduction (%)	
Mercury reduction (%)	96
Chlorine: Taste & Odor reduction (%)	97
Turbidity reduction (%)	
Asbestos reduction (%)	
Atrazine reduction (%)	94.5
Lindane reduction (%)	98.5
Particulate reduction (%)*	93.3
Fitting style	3/8" Push-to-connect
Water inlet valve	Push-to-connect adaptor
Undersink installation kit	●
APPEARANCE	
Style	1/4 turn encapsulated
Unit color	Light gray
Filter housing	Light gray
Mounting bracket	Horizontal or vertical
WEIGHTS & DIMENS.	
Approx. ship. wt. (lbs.)	4.0
Overall W x H x D (in.)	7 x 12 x 4-1/2
POWER/RATINGS	
Faucet monitor power requirement	
Filtration controller power requirement	2 AA batteries (included)

Caution: Do not use with water that is microbiologically unsafe or of unknown quality, without adequate disinfection before or after the system.
 Systems certified for cyst reduction may be used on disinfected water that may contain filterable cysts.
 *0.5-1 micron nominal.
 **Filter not included.

GE WHOLE HOUSE FILTRATION SYSTEM

GE	
GXWH70M	
FEATURES	
Feed water pressure (psi)	20 min.-125 max. 25 min.-125 max.
Feed water temperature	40°-100°F
Rated Flow Rate (gpm)	4.0
Maximum Flow Rate (gpm)	12.0
WiFi Connect	Water Usage Tracking Water Flow Alerts Remote Water Shutoff Salt Reminders
Filter change indicator	Connected alerts/ monitoring on smartphone
Filters	FTHLM (Premium) FTHTM (Advanced) FTHPM (Basic)
Port size	3/4" (1" requires additional fitting)
Port threads/connections	3/4" Push-to-connect
Compatible pipe connections	Vertical or horizontal
Pressure relief valve	●
Mounting bracket & hardware	●
Wrench	N/A
APPEARANCE	
Style	Twist lock (open sump)
Unit color	White
Filter housing	Clear
WEIGHTS & DIMENS.	
Approx. shipping wt. (lbs.)	11.50/16.01
Overall W x H x D (in.)	15-1/2 x 12-1/4 x 14-1/2

**Filter not included

GE DISPOSALL® FOOD WASTE DISPOSERS

FEATURES	GE CONTINUOUS FEED									BATCH FEED
	GFC1020N	GFC720N	GFC530N	GFC535N	GREEN05P	GFC520N	GFC525N	GFC320N	GFC325N	GFB760N
Motor horsepower	1	3/4	1/2	1/2	1/2	1/2	1/2	1/3	1/3	3/4
Magnetic sink stopper										●
Control method	Wall switch	Wall switch	Wall switch	Wall switch	Wall switch	Wall switch	Wall switch	Wall switch	Wall switch	Stopper
Feed type	Continuous	Continuous	Continuous	Continuous	Continuous	Continuous	Continuous	Continuous	Continuous	Batch
Power connection	Direct wire	Direct wire	Direct wire	Power cord	Power cord	Direct wire	Power cord	Direct wire	Power cord	Direct wire
Impellers										
Dual-swivel	●	●	●	●	●	●	●	●	●	●
Jam-resistant	●	●	●	●	●	●	●	●	●	●
Stainless steel	●	●	●	●	●	●	●	●	●	●
Armature shaft material	Cold-rolled carbon steel	Cold-rolled carbon steel	Cold-rolled carbon steel	Cold-rolled carbon steel	Cold-rolled carbon steel	Cold-rolled carbon steel	Cold-rolled carbon steel	Cold-rolled carbon steel	Cold-rolled carbon steel	Cold-rolled carbon steel
Grinding speed (RPMs)*	Over 2,800	Over 2,700	Over 2,600	Over 2,600	Over 2,600	Over 2,600	Over 2,600	Over 2,300	Over 2,300	Over 2,700
Capacity	Super	Super	Extra-large	Extra-large	Extra-large	Large	Large	Large	Large	Super
Mounting type	Easy Mount	Easy Mount	Easy Mount	Easy Mount	Universal 3-bolt mount	Easy Mount	Easy Mount	Easy Mount	Easy Mount	Easy Mount
3-bolt mount adapter kit included	●	●	●	●		●		●		●
Turntable material	Stainless	Stainless	Stainless	Stainless	Stainless	Galv. steel	Galv. steel	Galv. steel	Galv. steel	Stainless
Two-level precutter	●	●	●	●	●	●	●	●	●	●
Stainless steel sink flange	●	●	●	●	●	●	●	●	●	●
Manual reset overload protector	●	●	●	●	●	●	●	●	●	●
Splash guard	●	●	●	●	●	●	●	●	●	●
Sink stopper	●	●	●	●	●	●	●	●	●	●
Drain Boost	●	●	●	●	●	●	●	●	●	●
Dishwasher drain connector	●	●	●	●	●	●	●	●	●	●
Drain elbow	●	●	●	●	●	●	●	●	●	●
QUIET										
Sound reduction technology	●	●	●	●	●					●
WEIGHTS & DIMENSIONS										
Approx. shipping weight (lbs.)	14.9	12.45	9.6	9.9	10.1	8.8	9.1	8.4	8.7	13.75
Net weight (lbs.)	13.2	10.7	8.05	8.35	9.1	7.8	8.1	7.4	7.7	11
Dishwasher inlet diameter (in.)	1	1	1	1	3/4	1	1	1	1	1
Drain outlet diameter (in.)	1-1/2	1-1/2	1-1/2	1-1/2	1-1/2	1-1/2	1-1/2	1-1/2	1-1/2	1-1/2
POWER RATINGS										
Volts/Hertz/Amps	120/60/7.0	120/60/6.0	120/60/4.5	120/60/4.5	120/60/4.5	120/60/4.5	120/60/4.5	120/60/4.0	120/60/4.0	120/60/6.0
ACCESSORIES										
Power cord	PM3X215	PM3X215	PM3X215	Equipped	Equipped	PM3X215	Equipped	PM3X215	Equipped	PM3X215
WARRANTY										
One-year limited replacement warranty**	●	●	●	●	●	●	●	●	●	●
Additional limited parts warranty**	7-year	5-year	3-year	3-year	3-year	2-year	2-year			5-year

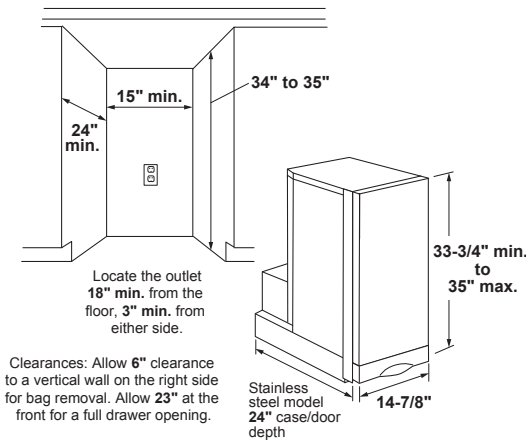
*Based on RPM testing of cleared GE and competitive models.
 **See written warranty for details.

GE BUILT-IN COMPACTOR

GE	
	UCG1520NSS UCG1500NWW UCG1500BB UCG1510NII
FEATURES	
Cycle time	30 seconds maximum
Motor horsepower	1/3
Compression ratio (average)	75% reduction of volume
Ram force (lb.) (max.)	2,300
Front level legs and rear wheels	●
Capacity	1.4 cu. ft.
Side-release bin	●
Toe/foot pedal drawer opener	●
Lock/start control w/removable key	●
Automatic anti-jam	●
Slide-out drawer	●
APPEARANCE	
Hidden controls	●
Colors available**	SS, WW, BB, II
	Stainless White Black Black
Toe kick	
WEIGHTS & DIMENSIONS	
Total shipping weight (lbs.)	152
Total appliance weight (lbs.)	141
Overall height (in.)	33-3/4 to 35
Overall width (in.)	14-7/8
Overall depth (in.)	24
Cutout dimensions H x W x D (in.)	34-35 x 15 min x 24
Clearance for drop-down drawer side	6" or more on right side
Drawer extension for removal	23" or more in front of appliance
ACCESSORIES	
Compactor bags (5 included)	WC60X5017 WC17X10019, WC17X10011, WC17X10006
Stainless toe kick (3 pieces required)	●
WARRANTY	
One-year limited warranty*	●

*See written warranty for details.
**SS = Stainless, WW = White, BB = Black, II = Custom panel-ready.

COMPACTOR DIMENSIONS (IN INCHES)



GE PARTS AND ACCESSORIES

WATER SYSTEMS	
Aluminum Anode Rod (GE30S08BAM; GE30S10BMLM; GE30/40L08BAM)	GEKAA24
Aluminum Anode Rod (GE30T08BAM; GE30T10BMLM; GE40S08/10BAM; GE40/50S10BMLM; GE50S08/10BAM)	GEKAA39
Aluminum Anode Rod (GE40T08/10BAM; GE40/50T10BMLM; GE50T08/10BAM)	GEKAA50
Pitched Roof Mounting Rails (GT25C10BAM)	GT25CKR
Hardware for GT25CKR	GT25CKHL
Pitched Roof Mounting Rails (GT50/GT40C10BAM)	GT50CKR
Hardware for GT50CKR	GT50CKHL
Pitched Roof Mounting Kit	GT00CKM01
30° angle, Flat Roof Mounting Kit (GT25C10BAM)	GT25CKM30
45° angle, Flat Roof Mounting Kit (GT25C10BAM)	GT25CKM45
30° angle, Flat Roof Mounting Kit (GT40C10BAM)	GT40CKM30
45° angle, Flat Roof Mounting Kit (GT40C10BAM)	GT40CKM45
30° angle, Flat Roof Mounting Kit (GT50C10BAM)	GT50CKM30
45° angle, Flat Roof Mounting Kit (GT50C10BAM)	GT50CKM45
Temperature Sensor Sleeve	GT00CKSL
Protective Cover (GT25C10BAM)	GT25CKC
Protective Cover (GT40C10BAM)	GT40CKC
Protective Cover (GT50C10BAM)	GT50CKC
Filtered Water Faucet	UNFCTFBL
Replacement O-Rings with Lubricant	UCRING
Universal Carbon Filter Wrench	UCWRNCH
Replacement O-Ring with Lubricant	HHRING
Universal Sump Wrench	HHWRNCH

COMPACTORS/DISPOSERS	
Universal Compactor Bags 15-count	WX60X1
Heavy-duty Compactor Bags 12-count	WC60X5017
Cerama Bryte™ Disposal Cleaner	WX10X311
Splash Guard	WC03X10010
Stopper	WC11X10003
Universal Disposer Power Cord Kit	WC12X10002
3-Bolt-Mount Adapter Kit	PM3X214
Door Toe Kick	WC17X10019 WC17X20082
Adjustable Door Kick Panel	WC17X10011

*IM4LED is available only through ADC network. Must be purchased using a dealer appliance account.
**New part number in 2020
Cerama Bryte is a registered trademark of Cerama Bryte, Inc.

WARRANTY INFORMATION
All parts and accessories have a limited one-year warranty, with the exception of water filters, which have a 30-day warranty.

LIMITED ONE-YEAR WARRANTY
If your GE part fails because of a manufacturing defect within one year from the date of original purchase, we will provide a new or, at our option, rebuilt part without charge. Return the defective part to the vendor from whom it was purchased with a copy of the "proof of purchase." If the part is defective and shows no signs of abuse, it will be exchanged.

This warranty does not cover the failure of parts which are damaged while in your possession, are abused, or have been installed improperly. It does not cover the cost of returning the part to the vendor from whom it was purchased nor does it cover the cost of labor to remove or install it to diagnose the fault. It does not cover parts used in products in commercial use except in the case of air conditioning equipment. In no event shall GE Appliances be liable for consequential damage.

EXCLUSION OF IMPLIED WARRANTIES:
Your sole and exclusive remedy is part exchange as provided in this Limited Warranty. Any implied warranties, including the implied warranties of merchantability or fitness for a particular purpose, are limited to one year or the shortest period allowed by law.

Warrantor: GE Appliances

GE REALMAX SERIES ELECTRIC WATER HEATERS

	GE							
	GE50T10BAM GE50T08BAM	GE50S10BAM GE50S08BAM	GE40T10BAM GE40T08BAM	GE40S10BAM GE40S08BAM	GE40L08BAM GE40L08BAM	GE30T10BAM GE30T08BAM	GE30S10BAM GE30S08BAM	GE30L08BAM GE30L08BAM
Rated capacity (gallons)	50	50	40	40	36	30	30	26
Nominal capacity (gallons)	50	50	40	40	36	30	30	26
FEATURES								
Family size*	3-5	3-5	2-4	2-4	2-4	1-3	1-3	1-3
Control type	Thermostat	Thermostat	Thermostat	Thermostat	Thermostat	Thermostat	Thermostat	Thermostat
Temperature setting	90-150°F	90-150°F	90-150°F	90-150°F	90-150°F	90-150°F	90-150°F	90-150°F
Temperature setting factory default	120°F	120°F	120°F	120°F	120°F	120°F	120°F	120°F
Drain valve type	Brass Plastic	Brass Plastic	Brass Plastic	Brass Plastic	Plastic Plastic	Brass Plastic	Brass Plastic	Plastic Plastic
WEIGHT & DIMENSIONS								
Approx. shipping weight (lbs.)	154	161	139	133	145	113	111	114
Height to water connection (in.)	63-7/8	53	65-1/2	52-7/8	33-5/8	51-3/8	42	32-7/8
Tank dimensions (diameter x height in in.)	22 X 62-3/8	24 x 51-1/2	20 x 64	22 x 51-3/8	27 x 32-3/4	20 x 49-7/8	22 x 40-3/8	24 x 31-1/4
Connection sizes—hot water outlet (mnpt)	3/4"	3/4"	3/4"	3/4"	3/4"	3/4"	3/4"	3/4"
Connection sizes—water inlet (mnpt)	3/4"	3/4"	3/4"	3/4"	3/4"	3/4"	3/4"	3/4"
POWER/RATINGS								
Electrical circuit direct wired	240V/60Hz/30A min. dedicated	240V/60Hz/30A min. dedicated	240V/60Hz/30A min. dedicated	240V/60Hz/30A min. dedicated	240V/60Hz/30A min. dedicated	240V/60Hz/30A min. dedicated	240V/60Hz/30A min. dedicated	240V/60Hz/30A min. dedicated
Heating elements	Stainless steel Copper	Stainless steel Copper	Stainless steel Copper	Stainless steel Copper	Copper Copper	Stainless steel Copper	Stainless steel Copper	Copper Copper
Element density	Low High	Low High	Low High	Low High	High High	Low High	Low High	High High
Lower element (watts)	5,500	5,500	5,500	5,500	5,500	5,500	5,500	5,500
Upper element (watts)	5,500	5,500	5,500	5,500	5,500	5,500	5,500	5,500
Uniform energy factor (UEF)	0.93	0.93	0.92	0.92	0.92	0.92	0.92	0.92
First hour rate (FHR) (gallons)	76	76	65	66	63/61	54	53	58/53
Operating water pressure	20-125 psi	20-125 psi	20-125 psi	20-125 psi	20-125 psi	20-125 psi	20-125 psi	20-125 psi
WARRANTY								
Parts warranty	10/8 years	10/8 years	10/8 years	10/8 years	8/8 years	10/8 years	10/8 years	8/8 years

*Household sizing based on back-to-back showers, 8 minutes long.

GE WIFI CONNECTED ELECTRIC WATER HEATERS

	GE					
	GE50T12BAM GE50T10BAM	GE50S12BAM GE50S10BAM	GE40T12BAM GE40T10BAM	GE40S12BAM GE40S10BAM	GE30T12BAM GE30T10BAM	GE30S12BAM GE30S10BAM
Rated capacity (gallons)	50	50	40	40	30	30
Nominal capacity (gallons)	50	50	40	40	30	30
FEATURES						
Family size*	3-5	3-5	2-4	2-4	1-3	1-3
Control type	Electronic with digital display and app	Electronic with digital display and app	Electronic with digital display and app	Electronic with digital display and app	Electronic with digital display and app	Electronic with digital display and app
Operating modes	Normal/Vacation	Normal/Vacation	Normal/Vacation	Normal/Vacation	Normal/Vacation	Normal/Vacation
Temperature setting	100-140°F	100-140°F	100-140°F	100-140°F	100-140°F	100-140°F
Temperature setting factory default	120°F	120°F	120°F	120°F	120°F	120°F
Drain valve type	Brass Plastic	Brass Plastic	Brass Plastic	Brass Plastic	Brass Plastic	Brass Plastic
Built-in WiFi with app	●	●	●	●	●	●
Diagnostic feedback	●	●	●	●	●	●
Sensing anode	●/—	●/—	●/—	●/—	●/—	●/—
WEIGHT & DIMENSIONS						
Approx. shipping weight (lbs.)	154	161	139	133	113	111
Height to water connection (in.)	63-7/8	53	65-1/2	52-7/8	51-3/8	42
Tank dimensions (diameter x height in in.)	22 x 62-3/8	24 x 51-1/2	20 x 64	22 x 51-3/8	20 x 49-7/8	22 x 40-3/8
Connection sizes—hot water outlet (mnpt)	3/4"	3/4"	3/4"	3/4"	3/4"	3/4"
Connection sizes—water inlet (mnpt)	3/4"	3/4"	3/4"	3/4"	3/4"	3/4"
POWER/RATINGS						
Electrical circuit direct wired	240V/60Hz/30A min. dedicated	240V/60Hz/30A min. dedicated	240V/60Hz/30A min. dedicated	240V/60Hz/30A min. dedicated	240V/60Hz/30A min. dedicated	240V/60Hz/30A min. dedicated
Heating elements	Stainless steel Copper	Stainless steel Copper	Stainless steel Copper	Stainless steel Copper	Stainless steel Copper	Stainless steel Copper
Element density	Low High	Low High	Low High	Low High	Low High	Low High
Lower element (watts)	5,500	5,500	5,500	5,500	5,500	5,500
Upper element (watts)	5,500	5,500	5,500	5,500	5,500	5,500
Uniform energy factor (UEF)	0.93	0.93	0.92	0.92	0.92	0.92
First hour rate (FHR) (gallons)	78	75	66	65	59	60
Operating water pressure	20-125 psi	20-125 psi	20-125 psi	20-125 psi	20-125 psi	20-125 psi
WARRANTY						
Parts warranty	12/10 years	12/10 years	12/10 years	12/10 years	12/10 years	12/10 years

*Household sizing based on back-to-back showers, 8 minutes long.

GE FLEXIBLE-CAPACITY ELECTRONIC WATER HEATERS

	GE		
	GE50S10BMM	GE40S10BMM	GE30S10BMM
Rated capacity at normal setting (gallons)	50	40	30
Capacity at X-High setting* (gallons)	80	64	48
FEATURES			
Family size on X-High setting**	3-6	2-5	1-4
Control type	Electronic with digital display	Electronic with digital display	Electronic with digital display
Operating modes	Normal/Vacation	Normal/Vacation	Normal/Vacation
Integrated, electronic mixing valve	●	●	●
Capacity settings	Normal/High/X-high	Normal/High/X-high	Normal/High/X-high
Temperature setting	100-140°F	100-140°F	100-140°F
Temperature setting factory default	120°F	120°F	120°F
Drain valve type	Brass	Brass	Brass
Built-in WiFi with app	●	●	●
Diagnostic feedback	●	●	●
Sensing anode rod	●	●	●
WEIGHT & DIMENSIONS			
Approx. shipping weight (lbs.)	171	143	121
Height to water connection (in.)	61	60-7/8	49-7/8
Tank dimensions (diameter x height in in.)	24 x 59-1/2	22 x 59-3/8	22 x 48-3/8
Connection sizes—hot water outlet (mnpt)	3/4"	3/4"	3/4"
Connection sizes—water inlet (mnpt)	3/4"	3/4"	3/4"
POWER/RATINGS			
Electrical circuit direct wired	240V/60Hz/30A min.	240V/60Hz/30A min.	240V/60Hz/30A min.
Heating elements	Stainless steel	Stainless steel	Stainless steel
Element density	Low	Low	Low
Lower element (watts)	5,500	5,500	5,500
Upper element (watts)	5,500	5,500	5,500
Energy factor	0.93	0.92	0.92
First hour rating (FHR) (gallons)	75 (normal setting)	65 (normal setting)	59 (normal setting)
Operating water pressure	20-125 PSI	20-125 PSI	20-125 PSI
WARRANTY			
Parts warranty	10 years	10 years	10 years

*Versus comparable water heater without mixing valve at 120° F setting and 58° F inlet water temperature.
**Household sizing based on back-to-back showers, 8 minutes long.

GE TANKLESS ELECTRIC WATER HEATERS

	GE							
	GE04SNLPDG	GE06SNHPDG	GE08SNHPDG	GE11SNHPDG	GE15SNHPDG	GE18SNHPDG	GE24DNHPDG	GE27DNHPDG
FEATURES								
Fuel type	Electric	Electric	Electric	Electric	Electric	Electric	Electric	Electric
Temperature setting	86-140° F Range	86-140° F Range	86-140° F Range	86-140° F Range	86-140° F Range	86-140° F Range	86-140° F Range	86-140° F Range
Temperature setting factory default	105° F	105° F	105° F	105° F	105° F	105° F	105° F	105° F
Activation flowrate (GPM)	≤ 0.3	≤ 0.3	≤ 0.4	≤ 0.4	≤ 0.4	≤ 0.5	≤ 0.5	≤ 0.5
Capacity (GPM) @ 37 F rise	0.3	0.5	0.7	1.1	1.5	2.0	2.7	3.0
Capacity (GPM) @ 42 F rise	0.3	0.5	0.8	1.3	1.7	2.1	2.9	3.3
Capacity (GPM) @ 47 F rise	0.4	0.6	0.8	1.3	1.8	2.3	3.1	3.4
Capacity (GPM) @ 52 F rise	0.4	0.7	0.9	1.5	2.0	2.4	3.4	3.8
Capacity (GPM) @ 57 F rise	0.5	0.7	1.1	1.7	2.1	2.6	3.6	4.2
Capacity (GPM) @ 62 F rise	0.5	0.9	1.3	1.9	2.3	2.9	3.9	4.4
Capacity (GPM) @ 67 F rise	0.6	1.1	1.6	2.2	2.6	3.4	4.6	5.1
Capacity (GPM) @ 72 F rise	0.7	1.2	1.7	2.5	2.9	3.8	5.3	5.4
Capacity (GPM) @ 77 F rise	0.8	1.4	2.0	2.8	3.4	4.5	6.0	6.2
Controls	Adjust degree Fahrenheit/Celsius. Adjustable Temperature. Digital Electronic Control							
Installation location	Indoor	Indoor	Indoor	Indoor	Indoor	Indoor	Indoor	Indoor
Integrated safety devices	Flow sensor/High limit thermostat (on each heating element). Inlet Temperature Sensor. Material Rated for Ignition Containment. Outlet Temperature Sensor							
Maximum outlet temperature (F)	140	140	140	140	140	140	140	140
Point of use	Yes	Yes	Yes	Yes	Yes	Yes	Yes	Yes
Temperature adjustment amount (degree)	1	1	1	1	1	1	1	1
Uniform energy factor (UEF)	>0.91	>0.91	>0.91	>0.91	>0.91	>0.91	>0.91	>0.91
Water connection location	Bottom	Bottom	Bottom	Bottom	Bottom	Bottom	Bottom	Bottom
Cold/hot water connections (inches)	1/2" Cold Water Inlet; 1/2" Hot Water Outlet	1/2" Cold Water Inlet; 1/2" Hot Water Outlet	1/2" Cold Water Inlet; 1/2" Hot Water Outlet	1/2" Cold Water Inlet; 1/2" Hot Water Outlet	1/2" Cold Water Inlet; 1/2" Hot Water Outlet	3/4" Cold Water Inlet; 3/4" Hot Water Outlet	3/4" Cold Water Inlet; 3/4" Hot Water Outlet	3/4" Cold Water Inlet; 3/4" Hot Water Outlet
Max. operating pressure (psi)	150	150	150	150	150	150	150	150
Min. operating pressure (psi)	25	25	25	25	25	25	25	25
APPEARANCE								
Installation	Wall Mounted	Wall Mounted	Wall Mounted	Wall Mounted	Wall Mounted	Wall Mounted	Wall Mounted	Wall Mounted
WEIGHT & DIMENSIONS								
Overall depth (in.)	3.4	2.4	3.7	3.7	2.4	3.7	3.4	2.4
Overall height (in.)	9.8	14.1	15.12	15.2	14.2	15.2	9.8	14.2
Overall width (in.)	10	8.5	10.2	10.2	8.5	10.2	10	8.5
Approximate shipping weight (lb.)	6	6	10	10	10	15	15	15
Net weight (lb.)	5	5	10	10	10	14	14	14
POWER/RATINGS								
Amps	29.2	22.9	33.3	45.8	60.8	75.0	100.0	112.5
Electrical circuit required	30 Amp	30 Amp	40 Amp	50 Amp	70 Amp	40 Amp (x2)	40 Amp (x3)	40 Amp (x3)
Power rating-kW (Derated for 208 V)	3.5	5.5 (4.8)	8 (6.9)	11 (9.5)	14.6 (11.3)	18 (15.6)	24 (20.8)	27 (23.4)
Voltage (MAX)	120.0	240.0	240.0	240.0	240.0	240.0	240.0	240.0
Voltage (MIN)		208.0	208.0	208.0	208.0	208.0	208.0	208.0
WARRANTY								
Parts warranty	Limited 1-year parts. Limited 5-year heat exchanger							

GE SOLAR WATER HEATERS

	GE		
	GT50C10BAM GEOSPRING™ SOLAR	GT40C10BAM GEOSPRING SOLAR	GT25C10BAM GEOSPRING SOLAR
Rated capacity (gallons)	51	38	24
FEATURES			
Configuration	Integrated collector storage	Integrated collector storage	Integrated collector storage
Cold/hot water connections (in.)	3/4 mnpt	3/4 mnpt	3/4 mnpt
Collector inclination angle from horizontal	20° to 75°	20° to 75°	20° to 75°
Liquid type	Water	Water	Water
Maximum operating pressure (psi)	60	60	60
Net collector area (sq. ft.)	23	17	10
WEIGHT & DIMENSIONS			
Approx. weight (with mount, no water) (lbs.)	168	125	83
Approx. weight (with mount, with water) (lbs.)	593	441	279
Collector outer dimensions (in.)	86 x 43 x 8	86 x 32 x 8	86 x 20 x 8
Maximum height mount 45°/30° (in.)	36/28	28/22	19/16
WARRANTY			
Parts warranty	10 years	10 years	10 years

GE ZONELINE® PACKAGED TERMINAL AIR CONDITIONER SPECIFICATIONS

AZ45 SERIES TYPICAL COOLING WITH ELECTRIC HEAT

	230/208V Models			
	AZ45E07DAB	AZ45E09DAB	AZ45E12DAB	AZ45E15DAB
CAPACITY				
Cooling BTUH	7,200/7,000	9,700/9,600	11,600/11,500	14,200/14,100
EER (BTU/Watt)	13.4/13.4	12.1/12.1	11.7/11.8	10.5/10.5
Dehumidification (pints/hr.)	1.64	2.7	3.5	4.6
FEATURES				
Refrigerant type	R-410A	R-410A	R-410A	R-410A
CFM, indoor fan high	350	390	420	435
CFM, indoor fan low	220	260	290	330
Vent CFM (full open*)	33	38	38	47
POWER/RATINGS				
Power factor	96%	98%	98%	97%
Sensible heat ratio	72%	64%	62%	63%
Cooling Watts	535/520	800/790	960/900	1,350/1,320
Cooling Amperes, F.L.	2.5/2.6	3.6/3.9	4.7/5.0	6.4/6.8
Amperes, L.R.	13.5	21.0	29.5	31.5
WEIGHT (NET/SHIP)	90/100	103/113	106/116	106/116

AZ45 SERIES COOLING WITH ELECTRIC HEAT (Premium Guard Corrosion Protection)

	230/208V Models				265V Models			
	AZ45E07DAC	AZ45E09DAC	AZ45E12DAC	AZ45E15DAC	AZ45E07EAC	AZ45E09EAC	AZ45E12EAC	AZ45E15EAC
CAPACITY								
Cooling BTUH	7,200/7,000	9,400/9,300	11,600/11,500	14,600/14,500	7,100	9,500	11,500	14,700
EER (BTU/Watt)	13.4/13.4	11.8/11.8	11.7/11.8	10.3/10.4	13.2	11.6	11.7	10.5
Dehumidification (pints/hr.)	1.64	2.7	3.5	4.6	1.64	2.7	3.5	4.6
FEATURES								
Refrigerant type	R-410A	R-410A	R-410A	R-410A	R-410A	R-410A	R-410A	R-410A
CFM, indoor fan high	350	390	420	435	348	393	420	435
CFM, indoor fan low	220	260	290	330	223	260	290	330
Vent CFM (full open*)	33	38	38	47	33	38	38	47
POWER/RATINGS								
Power factor	96%	98%	98%	97%	95%	94%	97%	97%
Sensible heat ratio	72%	64%	62%	63%	72%	67%	62%	63%
Cooling Watts	535/520	795/790	985/955	1,390/1,380	540	815	990	1,390
Cooling Amperes, F.L.	2.5/2.6	3.5/3.9	4.4/4.7	6.3/6.7	2.2	3.3	4.0	5.5
Amperes, L.R.	13.5	21	29.5	31.5	11.7	16.5	23.5	29.0
WEIGHT (NET/SHIP)	90/100	103/113	106/116	106/116	95/105	103/113	106/116	107/117

AZ45 SERIES COOLING WITH ELECTRIC HEAT (Dry Air 25)

	230/208V Models			265V Models	
	AZ45E07DAP	AZ45E09DAP	AZ45E12DAP	AZ45E09EAP	AZ45E12EAP
CAPACITY					
Cooling BTUH	6,900/6,800	9,400/9,300	11,200/11,000	9,400	10,900
EER (BTU/Watt)	12.8/12.8	12.1/12.1	11.4/11.5	12.1	11.0
Dehumidification (pints/hr.)	2.4	3.4	4.2	3.5	4.2
FEATURES					
Refrigerant type	R-410A	R-410A	R-410A	R-410A	R-410A
CFM, indoor fan high	350	370	360	370	360
CFM, indoor fan low	220	260	270	260	270
Vent CFM (full open)	40	44	44	44	44
POWER/RATINGS					
Power factor	96%	97%	98%	93%	97%
Sensible heat ratio	59%	58%	54%	58%	54%
Cooling Watts	535/530	775/765	970/960	780	995
Cooling Amperes, F.L.	2.5/2.7	3.5/3.8	4.4/4.7	3.2	3.9
Heating Amperes	13.5	21.0	29.5	16.5	23.5
WEIGHT (NET/SHIP)	96/106	109/119	112/122	109/119	112/122





GE APPLIANCES
a Haier company

AIR&WATER
SOLUTIONS

GE is a trademark of the General Electric Company. Manufactured under trademark license.

GE Appliances has a policy of continuous improvement of its products and reserves the right to change materials and specifications without notice.

Appliance Park
Louisville, KY 40225
geappliances.com
Digital Version PC95207